



# STOCKMAN 4500

## HYDROSTATIC DRIVE

### RIDE-ON MOWER

OWNER/OPERATORS MANUAL

**Model A16915G**  
**Hydrostatic Drive**

**CS45H19B35-14.1Kw (19hp) Briggs & Stratton 890mm (35") Cut**  
**CS45H19B42-14.1Kw (19hp) Briggs & Stratton 1055mm (42") Cut**



READ THIS MANUAL BEFORE OPERATING MACHINE

DEATH, PERSONAL INJURY AND/OR PROPERTY DAMAGE MAY OCCUR UNLESS INSTRUCTIONS IN THIS MANUAL ARE FOLLOWED

NOTE: Bring this Manual when Service & or Warranty work is required.

# OWNERS INFORMATION

**MACHINE CODE NO:** \_\_\_\_\_

**SERIAL NO:** \_\_\_\_\_

Located on label inside transmission housing

**B&S ENGINE MODEL NO:** \_\_\_\_\_ **TYPE** \_\_\_\_\_ **CODE** \_\_\_\_\_

**DATE OF PURCHASE:** \_\_\_\_\_

## ISSUED TO:

**OWNERS NAME:** \_\_\_\_\_

\_\_\_\_\_

**ADDRESS:** \_\_\_\_\_

\_\_\_\_\_

**TOWN/CITY:** \_\_\_\_\_ **STATE:** \_\_\_\_\_

## ISSUED BY:

**AUTHORISED DEALER/  
DISTRIBUTOR:** \_\_\_\_\_

\_\_\_\_\_

**ADDRESS:** \_\_\_\_\_

\_\_\_\_\_

**TOWN/CITY:** \_\_\_\_\_ **STATE:** \_\_\_\_\_

## PRE DELIVERY CHECK LIST

Check parts ☐ Assemble ☐ Service ☐ Instruction ☐

**ALWAYS KEEP THIS MANUAL IN A SAFE PLACE.**

# SAFETY INSTRUCTIONS

- Read, understand, & follow all instructions in the Owner/Operators manual.
- Know the controls and how to stop the engine quickly in an emergency.
- Allow only responsible adults, who are familiar with the instructions in this manual, to operate the machine.
- Clear the area to be mowed of loose objects such as sticks, stones, bones, wire, toys, debris, etc., which could be picked up and thrown by the blades.
- DO NOT mow whilst people, especially children, or pets are in the mowing area.
- DO NOT mow either direction on slopes beyond 15 degrees (1 in 3.75).
- Exercise extreme caution on slopes.
- Reduce speed on slopes and in sharp turns to prevent overturning or loss of control.
- Start or stop slowly when on slopes.
- Mow up and down slopes, not across the slope.
- Stay alert for holes or bumps in the terrain and other hidden hazards.
- Watch out for traffic when crossing or operating the mower near roadways.
- Stop the blades rotating before crossing surfaces other than grass.
- When using attachments, never direct discharge of material toward bystanders nor allow anyone near the machine while it is in operation.
- Before leaving the operators position-
  - a] Disengage all clutches and secure cutting units;
  - b] Return drive pedal to neutral position and set the parking brake;
  - c] Stop the engine and remove the key.
- Disengage drive to attachments and stop engine-
  - a] Before refueling;
  - b] Before checking, cleaning or working on the mower;
  - c] After striking a foreign object (check the mower for damage and make repairs before restarting and operating the equipment);
  - d] If machine starts to vibrate abnormally (check immediately).
- Disengage drive to attachments when transporting or not in use.
- A mower operator should be in good physical and mental health and not under the influence of alcohol or any drug which might impair vision, co-ordination or judgment.
- Never mow while barefoot or wearing open sandals or thongs. Wear long trousers and heavy shoes.
- It is advisable to wear suitable eye protection when operating a mower.
- Mow only in daylight or good artificial light.
- Before using, always visually inspect to see that blades, bolts and cutter assembly are not worn or damaged. Replace worn or damaged blades and bolts in sets to preserve balance.
- Check all nuts, bolts, and screws often; always be sure the mower is in safe operating condition.
- Keep safety devices (guards and switches) in place and in working order.
- Never use the mower unless the guards provided by the manufacturer, are in position.
- Ensure any replacement parts used comply with the original manufacture's recommendations and specifications.
- Replace worn or faulty silencers.
- Keep machine free of grass, leaves or other debris, excessive oil, grease, or spilt fuel. These can be a fire hazard.
- Refuel outdoors only. Do not smoke while fueling engine. Never remove the cap of the fuel tank or add petrol while the engine is running or the engine is hot. Remove fuel cap slowly to relieve any tank pressure. If fuel is spilled, do not attempt to start the engine but move machine away from the area of the spill and avoid creating any source of ignition until fuel vapors have dissipated.
- Check for fuel leaks while refueling, before and while using the mower. If a fuel leak is found, do not start or run the engine until the fuel leak is fixed and spilled fuel is wiped away.
- Do not operate engine in a confined space where exhaust fumes (carbon monoxide) can collect.
- Always mount the mower from the left or the opposite side to the discharge chute.
- Start the engine carefully with the cutting means disengaged.
- Do not over-speed the engine or alter governor settings. Excessive speed is dangerous and shortens mower life.
- Stop the engine whenever you leave the mower, even for a moment.
- Store the mower in a well-ventilated room away from naked flames such as may be found in hot water heaters.
- Do not lend or sell the mower, without the owners/operators Manual.

# INTRODUCTION

**THANK YOU, for purchasing a COX Hydrostatic Drive, STOCKMAN 4500 Ride-on Mower. Proudly Manufactured by Cox Industries (Australia) Pty. Ltd..**

**READ THIS MANUAL** carefully to learn how to operate safely and maintain your Ride-on Mower effectively.

Failure to follow Safety, Operating or Maintenance instructions in this manual could result in Death, Personal Injury or Equipment Damage.

**THIS MANUAL IS PART OF YOUR RIDE-ON MOWER** and should be supplied with this Ride-on Mower if you lend or sell this Ride-on Mower. This should also apply to the Engine Owners Manual.

## CONVENTIONS

Measurements in this manual are given in metric units unless otherwise stated.

Right-hand and Left-hand, are determined by facing the direction of forward travel.

Direction of rotation is determined by looking into the components in motion parallel to the axis of rotation.

## WRITE PRODUCT IDENTIFICATION NUMBERS

in the Owners Information Section of this manual. Accurately recording these numbers will assist your Cox Dealer when ordering spare parts or help in tracing the Ride-on Mower if it should be stolen. Store this manual in a secure place remote from the Ride-on Mower.

**ENSURE YOU UNDERSTAND THE WARRANTY POLICY** with regard to the responsibilities of operation, maintenance and ownership of this COX STOCKMAN Ride-on Mower.

**THE INTENDED USE OF THIS RIDE-ON MOWER** is for customary mowing of Landscaped Parks, Gardens, Grounds, Sporting Fields, Road Verges, Golf Course Fairways, Orchards, Plantations, and Vineyards.

Strict adherence to the conditions of Operation, Maintenance, Service & Repair as specified by the manufacturer constitute essential elements for The Intended Use.

Use in any other way not specifically approved directly in writing by the manufacturer is considered as contrary to the intended use and will increase the risk of personal injury or property damage and is therefore considered as misuse for which the manufacturer accepts no responsibility as these increased risks must be accepted solely by the user.

**Do Not Modify the Machine** without direct specific approval by the manufacturer as modification is considered contrary to the intended use and will increase the risk of personal injury or property damage and is therefore

considered as misuse for which the manufacturer accepts no responsibility as these increased risks must be accepted solely by the user.

**OPERATION, MAINTENANCE, SERVICE AND REPAIR** of this Ride-on Mower should be performed only by persons familiar with its characteristics and acquainted with the relevant Safety, Operating and maintenance instructions in this manual, as well as all relevant Statutory Regulations in force at the place and time.

When your Ride-on Mower needs service or repair please remember your **Cox Dealer is an industry trained professional** who is supported by the personnel of the Sales and Marketing, Engineering, Production, Procurement, Parts Distribution, & Service Sections of the Manufacturer and is dedicated to your satisfaction.

## THE INFORMATION INCLUDED IN THIS MANUAL

was considered correct at the time of approval for printing. Cox Industries (Australia) Pty Ltd reserves the right to change specifications or designs without notice or obligation.

---

## GENERAL SAFETY INSTRUCTIONS

### Training

**Read, understand and follow** all instructions in the Ride-on Mower and Engine Owner's/Operator's Manual as well as on Machine Safety Signs.

**Keep up to date with and follow** all relevant statutory regulations in force at the place and time with regard to ownership, transport, operation, maintenance, service, and repair, disposal or sale of this machine.

**Know the controls and the proper use of the Equipment** as well as how to stop the Mowing Attachment, Machine Travel, and the Engine in an emergency.

**All operators or users should seek and obtain professional and practical instruction.**

Such instruction should emphasize:

The need for concentration when working with ride-on machines.

Control of a ride-on machine sliding on a slope will not be regained by application of the brake.

The main reasons for loss of control are:

- i) Insufficient wheel grip;
- ii) Being driven to fast;
- iii) Inadequate braking;
- iv) The type of machine is unsuitable for the task;

v) Lack of awareness of the effect of ground conditions, especially slopes;

vi) Incorrect hitching and load distribution.

**Never allow** children or people unfamiliar with these instructions to operate the Ride-on Mower.

**Never carry passengers.**

**Never mow** while people, especially children, or unrestrained animals are nearby.

**Keep in mind** that the operator or user is responsible for accidents or hazards occurring to other people or their property caused by this machine.



## GENERAL SAFETY INSTRUCTIONS CONT.

### Preparation

**While operating,** always wear substantial footwear (not open sandals) and long trousers.

**Thoroughly inspect the area** where the equipment is to be used and remove all objects which can be thrown by the machine.

**WARNING – Petrol is highly flammable:**

- i) Store fuel in containers specifically designed for this purpose;
- ii) Refuel outdoors only;
- iii) Do not smoke while refuelling;
- iv) Add fuel before starting the engine;
- v) Never remove the cap of the fuel tank or add petrol while the engine is running or when the engine is hot;
- vi) If petrol is spilled, do not attempt to start the engine but move the machine away from the area of spillage and avoid creating any source of ignition until petrol vapours have dissipated;
- vii) Replace all fuel tank caps and container caps securely.

**Replace faulty Mufflers.**

**Before using,** always visually inspect to see that the cutter assembly, blades, and blade bolts are not worn or damaged.

**Replace worn or damaged blades and bolts** in sets to preserve balance.

**Take care rotating one blade by hand** as this can cause other blades to rotate.

### Operation

**Do not operate the engine** in a confined space where dangerous carbon monoxide fumes can collect.

**Operate the machine only in daylight** or in good artificial light.

**Before attempting to start the engine,** disengage Power take off Clutch and depress clutch/brake pedal to ensure drive is disengaged to the transmission.

**Do not use on slopes of more than 15 degrees (1 in 3.75 or 27%).**

**There is no such thing as a safe slope.**

**Travel on grass slopes requires particular care.**

**To guard against overturning:**

- i) Do not stop or start suddenly when going up or downhill;

- ii) Engage hydrostatic drive slowly;
- iii) Always keep hydrostatic drive operating, especially when travelling downhill;
- iv) Machine speeds should be kept low on slopes and during tight turns;
- v) Stay alert for humps and hollows and other hidden hazards;
- vi) Never mow across the face of the slope.

**Use care when pulling loads** or using heavy equipment:

- i) Use only approved hitch points;
- ii) Limit loads to those you can safely control;
- iii) Do not turn sharply;
- iv) Use care when reversing;

**Watch out for traffic** when crossing or near roadways.

**Stop the blades rotating** before crossing surfaces other than grass.

**When using the mowing attachment,** never direct discharge of material towards bystanders nor allow anyone else near the machine while it is operating.

**Never operate the machine with defective guards,** or without all safety devices in place and operating correctly.

**Do not change the engine governor settings** or over speed the engine as excessive engine speed can increase the risk of personal injury.

**Before leaving the operators position:**

- i) Disengage the power take off clutch;
- ii) Set the parking brake in the locked position.

**Disengage drive to attachments** when transporting, emptying the catcher, or not in use.

**Disengage drive to attachments and stop engine** before refuelling.

**Disengage drive to attachments, stop engine, and remove the ignition key:**

- i) Before leaving the machine unattended;
- ii) Before clearing blockages or unclogging the chute;
- iii) After striking a foreign object. (Inspect the machine for damage and make repairs before restarting or operating the damaged equipment);
- iv) If the machine starts to vibrate

abnormally. (Check immediately).

**Disengage drive to attachments, stop engine, remove the ignition key, and disconnect the spark plug wires and battery positive lead** before working on, maintaining, or servicing the machine.

**Secure the mowing attachment in the full up position:**

- i) Before clearing blockages or unclogging the chute;
- ii) Before replacing the blades, or adjusting the tension of the blade bolts;
- iii) Before placing any tools or any part of your person under the mowing attachment.

**Turn the fuel off using the fuel shut off valve** at the conclusion of operation.

### Maintenance and Storage

**Keep all nuts, bolts and screws tight** to ensure the equipment is in safe working order.

**Replace worn or damaged parts** for safety.

**Reduce the fire hazard,** by keeping the engine, muffler, hydrostatic transaxle, battery compartment, and petrol storage area clear of grass, leaves, or excessive oil and grease.

**Also ensure the mowing attachment drive belt can not come into contact with grass, sticks, and leaves** built up on the top surface of the mowing attachment.

**If the fuel tank has to be drained** this should be done outdoors.

**Never store the machine with petrol in the tank** inside a building where fumes can reach an open flame or spark.

**Allow the engine to cool** before storing the Ride-on Mower in any enclosure.

**When the machine is to be parked, stored or left unattended** raise the mowing attachment and secure it in the full up position.

---

# UNPACKING INSTRUCTIONS

## Unpacking Instructions

Inspect the shipping crate and contents for damage.

Position the shipping crate on a firm flat level surface with at least 3 meters distance from any obstruction to the end of the crate adjacent to the front of the tractor.

**! Caution you can be seriously injured by the metal strapping which has sharp edges and can spring out when cut. Wear gloves when handling metal strapping.**

**! Caution you can be seriously injured by sharp nails protruding from the shipping crate.**

Cut and remove the straps restraining the tractor to the ends of the shipping crate.

Remove the end of the shipping crate adjacent to front of the tractor.

Remove the plastic sheet covering the tractor.

Unlock the park brake knob by depressing the clutch/brake pedal (the pedal on the left side of the tractor). Pull the transaxle transmission pump bypass lever fully forward to bypass the transmission pump and allow the tractor to be pulled with less effort.

Pull the tractor from the shipping crate. Depress the brake pedal while lifting up on the park brake knob. Once the park brake knob is raised release the brake pedal and then the park brake knob.

The Park brake should now be locked on.

Push the transaxle transmission pump bypass lever fully rearward to engage the transmission pump and allow the tractor to be driven.

Remove the steering wheel, seat sub-assy, & other loose components from the packaging.

**Dispose of all packaging material responsibly.**

**Do not leave the plastic sheet unrestrained, it can blow away to become a safety hazard.**

---

# PRE-DELIVERY INSTRUCTIONS

## INTRODUCTION:

The purpose of this procedure is to ensure the dealer/distributor has assembled & made the necessary checks, & adjustments, before the mower is operational, and instructed the owner in its safe operation & maintenance. This procedure begins upon receiving the crated mower and is finalised once the mower has been either sold or leaves the dealer/distributors premises. This is the minimum amount of work required, however it should not be limited to only the areas detailed in this procedure.

## RESPONSIBILITY:

It is the responsibility of the dealer/distributors to ensure that before a mower is delivered to a customer, it is in perfect operational condition.

## PROCEDURE:

### CHECK COMPONENTS SUPPLIED IN SEAT PROTECTION BAG

- ☐ Engine owners manual
- ☐ Owner/Operator manual
- ☐ Ignition keys (AM015)
- ☐ Spark plug spanner (AM295)
- ☐ Steering wheel (SW14H)
- ☐ Roll Pin (DP10)
- ☐ Spring pull hook (13127)
- ☐ Tommy bar (AM007)
- ☐ Set Screws M8X20 (SH0820M) x 2
- ☐ Nuts M8 Nyloc (NM8NT) x 2
- ☐ Seat Springs x 2 (A163060)
- ☐ Spring Caps x 2 (A160231)
- ☐ Washer (W05M202) x 2
- ☐ Warranty Card
- ☐ Pre-delivery Instruction Sheet

## ASSEMBLY:

### TOOLS & EQUIPMENT REQUIRED:

Socket set containing 13mm a/f socket & extension 75mm (3") or longer. Spanner 13mm a/f. Hammer & 6mm or 1/4" pin punch.

Refer pictorial procedure provided.

### STEERING WHEEL

To attach the steering wheel, align the hole in the steering wheel boss to the hole in the steering shaft and use a hammer and suitable punch to drive the DP10 roll pin through the steering wheel and shaft. Ensure that the pin is situated centrally in the steering wheel boss and that the steering is free to turn.

Press the steering wheel center cover into place using hand pressure only.

### HOURLMETER

Connect the black negative wire to the terminal supplied at the back of the hourmeter.

### SEAT MOUNT & SEAT SPRINGS

Install the two seat springs using the screws, washers, nuts, to the seat slide frame, and tighten the screws, washers, and nuts. Install the Seat & Mounting to the seat slide frame using the Screws and Nuts. Attach seat switch wiring to seat switch.

### CHECK TYRE PRESSURES & FLUID LEVELS:

#### TYRES

Before operation ensure that tyre pressures are equal on both sides. Uneven pressure can give an uneven finish when mowing and may cause damage to tyres and/or tubes.

The recommended pressure is:

Front 170kPa (24 P.S.I.). Rear 100kPa (15 P.S.I.)

#### BATTERY

This machine is fitted with a maintenance free battery.

#### ENGINE OIL

Before operation ensure that engine oil level is to the full mark on the dipstick. (Refer engine owners manual for procedure & if some oil needs to be

added refer Engine owners Manual for Correct Grade).

#### FUEL

Ensure the fuel tap at the bottom left front side of fuel tank is turned to the on position before attempting to start engine. (Use unleaded fuel only).

### CHECK OPERATION OF SAFETY SWITCHES:

#### STARTING

##### Clutch/Brake switch

With PTO (power take off) switch in disengaged position (down/off) attempt to start engine without the clutch/brake pedal depressed. **Engine should not start.**

##### PTO switch

Sit on seat with the clutch/brake pedal fully depressed and PTO switch engaged (On), attempt to start engine. **Engine should not start.**

##### Key Switch

With PTO switch in down (disengaged/off) position & clutch/brake pedal fully depressed turn key switch to start position. **Engine should start.**

#### STOPPING

##### Seat switch

Sit on seat and start engine, engage cutter, (manual or electric control) and lift weight from seat.

**Engine should stop.**

##### Clutch/Brake switch

Sit on seat and start engine depress clutch/brake pedal and apply park brake, lift weight from seat.

**Engine should continue to run.**

Sit on seat with engine running and park brake off, clutch/brake pedal not depressed and lift weight from seat.

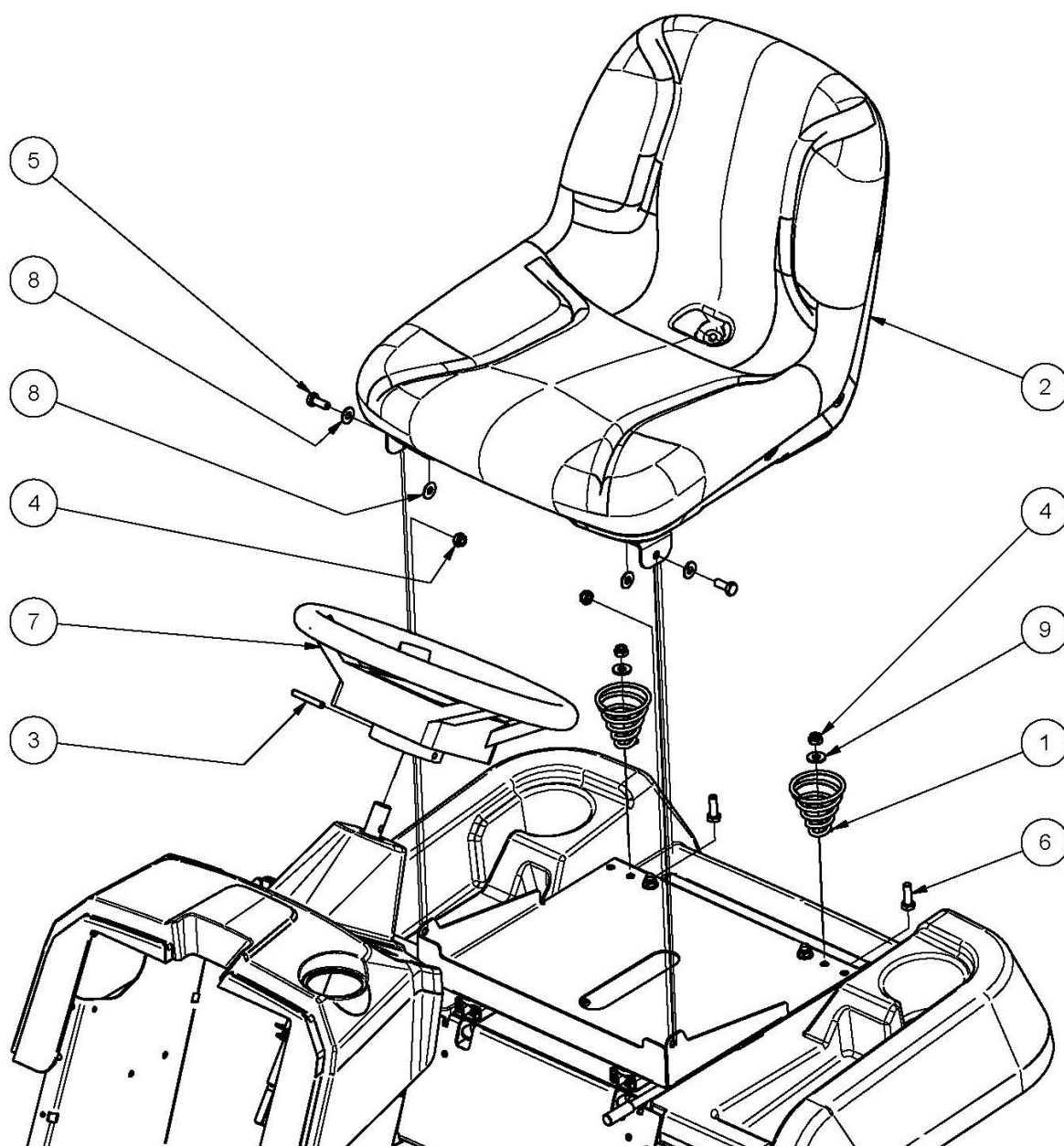
**Engine should stop.**

##### Key Switch

Sit on seat and start engine, turn key switch to stop position.

**Engine should stop.**

## PRE-DELIVERY PARTS EXPLODED VIEW



ITEM	PART NUMBER	DESCRIPTION	QTY
1	A163060	Spring, Compression, Conical, Seat, Heavy	2
2		Sub-Assy, Seat, Sman 4500	1
3	DP10	Pin, Roll, Spring, 1/4"X1-3/4", Znpl	1
4	NM8NT	Nut, Hex, Nyloc, Thin, M 8, Pc6, Znpl	4
5	SH0820M	Screw, Hex, M 8x 20, Pc8.8, Znpl	2
6	SH0825M	Screw, Hex, M 8x 25, Pc8.8, Znpl	2
7	SW14H	Wheel, Steering, 14", 02hub+Cover	1
8	W051218	Washer, Flat, Bright, 5/16"X3/4"X18g, Znpl	4
9	W05M202	Washer, Flat, Bright, 5/16"X3/4"X14g	2
	A168231	Cap, Spring, Seat	2

# OPERATING INSTRUCTIONS

## IMPORTANT

### RECOMMENDED FUEL

Unleaded fuel is recommended by all manufacturers of engines fitted to Cox products.

### SAFETY SWITCHES

Before operating machine, ensure that all safety switches are operating correctly. Do not operate machine with faulty, missing or damaged safety switches.

## BLADE WARNING

Do not use mowing attachment with broken or bent blades, damaged or worn bolts and nuts or damaged cutter disc, otherwise damage and premature wear will result from vibration. Replace blades, bolts and nuts only in pairs to maintain correct balance. Recommended blade nut torque is 36-40Nm. Do not over tighten.

Keep both feet and hands clear of the mowing attachment at all times while attempting to start or operate the machine.

**WARNING!**  
**DO NOT OPERATE**  
**WITHOUT MOWING**  
**ATTACHMENT**  
**DEFLECTOR FITTED &**  
**DOWN.**

Reference to left or right hand side of machine is determined by sitting in the operating position on the machine.

Safety footwear is recommended when operating machine.

Reference to left or right hand side of machine is determined by sitting in the operating position on the machine.

Mount and dismount only from left hand side of machine.

Ensure machine has clutch/brake pedal fully depressed or parking

brake engaged when attempting to start engine.

Never allow engine revs to exceed more than 3600 RPM.

## The Instruments, the Controls and their functions are as follows;

### Key Switch-

Used to start and stop engine. Insert key, turn key all the way right to start (3rd) position to start engine. When key is released from start (3rd) position it will return to on | (2nd) position. Turn key all the way left to off O (1st) position to stop engine. Remove key from off O (1st) position to lock ignition switch.

### PTO Switch-

Used to activate the electromagnetic clutch/brake to start (engage) and stop (disengage and brake) mowing attachment blades and allow starting of engine with mowing attachment blades disengaged from engine. With engine running at fast speed pull KNOB up to (ON) position to start (engage) mowing attachment blades. Push knob down to (OFF) position to stop (disengage and brake) mowing attachment blades.

### Seat Switch-

Used to stop engine if operator is not on the seat (switch not depressed) & cutter engagement PTO switch is engaged (on) or the park brake switch is not depressed (park brake not locked on).

### Clutch/Brake Pedal & Park Brake Switch-

Used to allow starting of the engine when depressed.

Used to stop engine when not depressed and seat switch is not depressed.

### Hourmeter-

Used to indicate the number of hours the engine has operated.

Note:- Ignition switch must be in the on position for the hourmeter to display hours.

### Engine Speed/Choke Control Lever-

Used to regulate engine speed and cutter speed also to engage/regulate/disengage the engine choke to assist in starting a cold engine. Push LEVER fully forward to engage the engine choke fully.

Pull LEVER back so front edge of LEVER is in line with the fast (rabbit) symbol on dash decal to disengage choke fully.

Pull LEVER back for slow engine and cutter speed and push LEVER forward to fast symbol on dash decal for fast engine and cutter speed.

### Clutch/Brake Pedal-

Used to disengage drive to the transaxle and apply the brake to slow or stop machine travel in forward or reverse direction. Used to allow engagement of park brake in locked (on) position. Used to allow starting of engine. Used to release park brake from locked (on) position.

Depress PEDAL to apply brake. Depress PEDAL to allow raising of park brake knob to locked (on) position. Depress PEDAL to allow starting of engine. Depress PEDAL to release park brake from locked (on) position.

### Park Brake Knob-

Used to lift the park brake rod and engage with the clutch/brake linkage to secure the brake into the locked (on) position.

Used to allow starting of the engine if the mowing attachment is stoped (PTO. clutch/brake knob is pushed down) without the operator depressing clutch/brake pedal or being on the operators seat.

Used to allow the operator to leave the operating position with the engine running if the park brake is in the locked (on) position and the mowing attachment is also stoped (PTO. clutch/brake knob is pushed down).

Depress brake pedal fully, then lift the park brake KNOB into the locked (on) position and release the brake pedal, leaving the KNOB in the locked (on) position. Depress the clutch/brake pedal to release the park brake and let it return to the off position.

---

## OPERATING INSTRUCTIONS CONT.

### Seat Adjustment Lever-

Used to allow adjustment of the seat backwards or forwards to give the most comfortable operating position. Pull the LEVER left to unlock the seat slide mechanism, and move seat backwards or forwards until most comfortable operating position is reached, release LEVER and attempt to move the seat backwards or forwards slightly to allow the LEVER to return to the fully right position and to ensure the seat is locked in position.

### Drive Pedal-

Used to control an infinitely variable ground speed between zero and maximum in forward or reverse. Also to select neutral. With engine running and clutch/brake pedal released push down on front of drive pedal to travel forward, push down on back of drive pedal to travel in reverse. When pressure is released from front or back of pedal it will return to neutral position.

### Mowing Attachment Cutting Height Adjustment Lever-

Used to change the mowing attachment cutting height. To alter cutting height, lift lever slightly and depress button, move lever up to raise or down to lower the mowing attachment cut height, stop at desired cutting height and release button to lock at 1 of 10 height positions.

**NOTE— Do Not mow in any direction on slopes beyond 15 degrees (1 in 3.75).**

### Transmission Pump By-Pass Lever-

Used to disengage the transmission to allow the mower to be pushed easily. Located at the front of the transmission and near the middle of the chassis. Move lever to back for normal operation or move lever forward for free wheel.

### Fuel Tap Knob-

Used to shut off the fuel line to stop fuel flow to the engine when the tractor is transported or not in operation to reduce the likelihood of fuel leakage. Turn the KNOB clockwise ¼ of a turn from the on

position to the off position to shut off the fuel line to stop fuel flowing to the engine. Turn KNOB anticlockwise ¼ of a turn from the off position to the on position to allow fuel to flow to the engine.

### Oil Level Dipstick-

Used to indicate oil level in engine when engine is not running. (Refer to engine owners manual for instructions on checking engine oil level)

## TO OPERATE

### BEFORE STARTING / STOPPING:

See Engine Maintenance/ Instruction Sheet.

Check engine oil level, check fuel level, turn fuel tap on.

### STARTING ENGINE

**Cold Engine:** To start engine, place speed control lever into choke position, ensure PTO switch is in the "off" position, park brake locked or clutch/brake pedal fully depressed, insert key in key switch, turn key all the way right to start (3rd) position, release key when engine has started.

Note: More than 15 seconds of continuous cranking can damage the starter motor. Short starting cycles give best starter motor life. Allow starter motor to cool for 2 minutes before attempting to restart engine. After engine starts gradually move speed control lever, out of choke position to obtain desired engine speed.

### Hot engine:

To start engine, place speed control slightly past slow position, ensure PTO switch is in the "off" position, park brake locked or clutch/brake pedal fully depressed, insert key in key switch, turn key all the way right to start (3rd) position, release key when engine has started. Move speed control lever to obtain desired engine speed.

### STOPPING ENGINE

When stopping engine, ensure PTO switch is in the off position, return speed control to fast position, lock park brake, turn key switch to the "off" (1st) position.

### DRIVING

#### To Travel Machine Forward Or Reverse-

With engine running set speed control lever to obtain desired engine speed, ¾ to full speed for the best mowing finish and for engine and transmission cooling. Release park brake, let the clutch/brake pedal all the way out, apply downward pressure on front of drive pedal to travel forward, or apply downward pressure on back of drive pedal to travel in reverse. It is not necessary to apply foot brake before changing from forward to reverse or reverse to forward. The amount of pedal travel is used to control the ground speed, small downward travel will give a slow ground speed, full downward travel will give a fast ground speed.

**NOTE Use slower ground speed for traveling up and down slopes, turning, or mowing heavy growth.**

**Take care when reversing, always look in the direction of intended travel before changing direction.**

#### To Stop Machine Travel-

Apply clutch/brake pedal fully, this will disconnect the drive belt to the transmission before the brake is activated.

# MAINTENANCE INSTRUCTIONS

**It is the owner's responsibility to ensure that all-periodical checks, necessary adjustments, services and repairs are carried out. Failure to do so may result in death, personal injury and/or property damage.**

Before attempting any maintenance, stop engine, ensure mowing attachment blades have stopped rotating, disconnect spark plug lead from spark plug and ground it, disconnect battery at negative terminal, to prevent accidental starting.

Position machine on a flat level surface for maintenance.

Never alter factory setting of maximum engine R.P.M (3600).

Reference to the left or right side of the machine is determined by sitting in the operating position.

**IMPORTANT:** If operating in adverse conditions such as those mentioned below, change engine oil, air filter, lubrication and adjustments should be carried out at less time intervals than specified in this booklets maintenance schedule. Ensure machine has park brake engaged when attempting to start engine.

- Mowing in hot or wet conditions.
- Mowing in rough or dusty conditions.
- Mowing hilly areas or continuous heavy load conditions.

**CHECK & ADJUST ENGINE OIL LEVEL** - Refer to engine owners manual for correct method to check & adjust engine oil level.

## CHANGE ENGINE OIL & OIL FILTER

Refer to engine owner's manual for correct method to change engine oil & oil filter.

## CHECK ENGINE AIR CLEANER & FOAM PRE-CLEANER-

Refer to engine owners manual for correct method to check and service engine air cleaner & foam pre-cleaner.

## CHECK BONNET SIDE MESH -

If mesh is more than one quarter blocked by debris clean mesh. Wipe mesh with hand, rag or brush to remove debris from mesh.

**CHECK ENGINE ROTATING SCREEN** Refer to engine owners manual for correct method to check and clean engine rotating screen /debris guard.

**LUBRICATION OF MACHINE-** Lubrication of machine must be carried out every 25 hours of operation or once a month, whichever occurs first. Lubricate at less time intervals when operated under adverse conditions.

**OILING:** A few drops of oil should be placed at the following points: Steering rod ends, mower suspension link rod end, height adjustment mechanism.

**CHAIN:** Use only chain lube for lubrication of the steering chain.

**GREASE POINTS:** Grease nipples are located on top of the front wheel stub axles.

## GREASE STUB AXLES:

Clean grease nipple, use grease gun and general-purpose grease to force old grease from top and bottom of front axle bushes. If grease is not released from bottom of bush jack up front of machine and try again .

**ENGINE TO TRANSMISSION VEE BELT ADJUSTMENT-** Tension is automatically adjusted by the belt tensioning springs.

**ENGINE TO CUTTER VEE BELT ADJUSTMENT-** Tension is automatically adjusted by the belt tensioning springs.

**TO ADJUST STEERING CHAIN-** Adjust chain by loosening the two bolts which hold the steering idler shaft mounting bracket in position, slide rearwards to tension chain then retighten bolts.

**CHECK CLUTCH OPERATION** – With pedal in up position check for 3-4mm play in the disengage linkage slot and the disengagement arm pin (adjust after removing 'R' pin and washer) and turning linkage in or out to achieve correct play (replace 'R' pin and washer).

**CHECK BRAKE OPERATION** – Apply Clutch/Brake pedal and set park brake, if mower can be pushed brake pad, brake spring, or brake linkage may need servicing.

## CHECK OPERATION OF SAFETY SWITCHES:

### STARTING

#### Clutch/Brake switch

With PTO (power take off) switch in disengaged position (down/off) attempt to start engine without the clutch/brake pedal depressed. **Engine should not start.**

#### PTO switch

Sit on seat with the clutch/brake pedal fully depressed and PTO switch engaged (On), attempt to start engine. **Engine should not start.**

#### Key Switch

With PTO switch in down (disengaged/off) position & clutch/brake pedal fully depressed turn key switch to start position. **Engine should start.**

### STOPPING

#### Seat switch

Sit on seat and start engine, engage cutter, (manual or electric control) and lift weight from seat.

**Engine should stop.**

#### Clutch/Brake switch

Sit on seat and start engine depress clutch/brake pedal and apply park brake, lift weight from seat.

**Engine should continue to run.**

Sit on seat with engine running and park brake off , clutch/brake pedal not depressed and lift weight from seat.

**Engine should stop.**

#### Key Switch

Sit on seat and start engine, turn key switch to stop position.

**Engine should stop.**

**CUTTER BRAKE ADJUSTMENT-** Automatically adjusted by permanent magnets on the electro magnetic clutch/brake.

**CUTTER HEIGHT ADJUSTMENT-** Stop engine, ensure mowing attachment blades have stopped rotating, disconnect spark plug lead from spark plug and ground it, disconnect battery at negative terminal, to prevent accidental starting. If the Mowing Attachment can not be positioned to give a satisfactory grass cut height using the available notches on the cut height mechanism, position the mower on a smooth level surface, lock the park brake on, and lower the Mowing Attachment to the notch above the desired cut height. Place 3 equal height spacers (that can support the mowing attachments weight) , of the desired height, under the mowing attachment one on each side at the lower front adjacent to the cut -out & one at the middle of the back and lower the Mowing Attachment onto them. Loosen the

2 short screws located together on the front of the rear suspension mount. Push the rear link rearwards until it stops and retighten the 2 screws. Lift the Mowing attachment off the spacers and remove the spacers and check the cut height is as desired and the deck is level to slightly higher (3–5 mm) at the back. Adjust height again if required.

**REPLACE BLADES-** Stop engine, ensure mowing attachment blades have stopped rotating, disconnect spark plug lead from spark plug and ground it, disconnect battery at negative terminal, to prevent accidental starting. Check condition of cutter disc remove the blade nut using a suitable spanner (if using a socket remove the blanking grommet to gain access to the blade nut) and replace all blades, bolts, nuts and washers to preserve balance, tighten blade nut to (36-40Nm). Do not over tighten. Re-fit blanking grommet if removed.

## TO REMOVE MOWING ATTACHMENT –

Stop engine, ensure mowing attachment blades have stopped rotating, and spark plug lead is disconnected & grounded, disconnect battery negative terminal to prevent accidental starting, disconnect the belt tensioning spring (front left hand side of mowing attachment). Lower mowing attachment onto 20mm block front and rear. Remove cutter belt from engine pulley. Remove two M10 x 50mm bolts, nuts & washers from mower suspension link at rear of the mowing attachment. Remove mowing attachment pivot pin lock screw and nut (6mm) and remove mowing attachment pivot pin. Remove the M8x35mm bolt from the cradle frame attachment bracket. Turn the front wheels a little to the left and twist the mowing attachment to the right and slide the deck from under the mower to the right side.

Re-assemble in reverse order. To assist in refitting mowing attachment pivot pin, raise the mowing attachment slightly. Refit mower suspension link & lifting links and M10x50mm bolts, nuts and washers. Refit cutter belt, connect belt tensioning spring and refit spark plug lead and battery terminal.

**BATTERY MAINTENANCE-** Batteries can be dangerous as they contain acids (corrosive chemicals), flammable vapours, large amounts of stored electrical energy, which may cause chemical burns, explosions or fires. Where goggles and a protective face guard. Remove jewellery/watches before handling the battery. Do not perform any battery maintenance where there are open flames or the possibility of sparks. Always work in a well ventilated area. Ensure the top of the battery is clean and dry (free of dirt and grime) as a dirty battery can discharge across the top of the battery casing. Inspect the terminals, screws and cables for breakage, damage or loose connections and they are clean, tight and free of corrosion. When not in use, a battery discharges by as much as 1% a day, more when the climate is warm. To make up for this loss, a boosting charge should be given once a month. Disconnect battery terminals (negative terminal first) to charge, then allow to stand minimum 1/2hr before re-connecting (negative terminal first). If a battery is not used for a period of more than three (3) months, the terminals should be disconnected and trickle charged at two (2) amps for two (2) hours once every three (3) months or before use. At the end of any maintenance ensure the battery is securely fastened in place, especially if it has been removed.

# MAINTENANCE INSTRUCTIONS cont.

**CHECK TYRE PRESSURES** - Uneven pressure can give an uneven finish when mowing and overly low or high pressures may cause damage to tyres and/or tubes. The recommended pressure is: 170kPa (24 P.S.I.) Front. 100kPa (15 P.S.I.) Rear.

**CLEANING MACHINE WITH WATER PRESSURE** - Allow machine to cool down (min 2 hrs) before hosing down. Start engine and engage drive and cutting systems to clear water from pulleys and belts. Stop engine and allow machine to dry. Lubricate as required. Do not cover machine with plastic or vinyl type material.

**CLEANING AND POLISHING PLASTIC BONNET & MUDGUARD** - To keep scratches on bonnet & foot pan to minimum, do not rub or brush off with bare hands, use a soft cloth or a light flow of compressed air. For dirt, wash with a steady stream of water only (no detergent), then blow off excess water with air. To polish remove excess dust or dirt. When surface is dry, spray on an automotive type plastic preservative and leave on for 30 to 60 seconds. Using a dry soft cloth (i.e. cheesecloth) wipe off to bring up lustre.

**GENUINE SPARE PARTS** - Always use Genuine COX Spare Parts. Use of non-genuine COX spare parts will void your warranty.

## SAFETY FIRST -

The use of mechanical devices can cause injury or property damage if incorrect procedures are used. Please ensure all operators & users read & understand all safety instructions in this manual.

## CHECK FOR LOOSE FASTENERS - TORQUE SETTINGS

5/16" UNC BOLT	20Nm (15lbf ft)
3/8" UNC bolt/nut	36Nm (27lbf ft)
7/16" UNF BOLT	68Nm (50lbf ft)
6mm BOLT/NUT	9Nm (6lbf ft)
8mm BOLT/NUT	15Nm (11lbf ft)
10mm NUT	44Nm (32lbf ft)
12mm NUT	53Nm (39lbf ft)

## MAINTENANCE SCHEDULE

### BEFORE EACH USE

Check engine oil level, adjust if required  
Check engine air cleaner & foam pre-cleaner, service if required  
Check engine rotating screen/finger guard, clean if required  
Check operation of safety switches, service if required  
Check clutch/ brake operation, adjust if required  
Check tyre pressures, adjust if required  
Grease stub axles

Lubricate steering ball joints  
Check for loose fasteners, tighten if required  
Check mowing attachment cutter blades, bolts, nuts, housing, chute, grass catcher and guards for wear or damage, repair or replace if required  
Lubricate as necessary

### BEFORE EXTENDED STORAGE

Change engine oil - Clean machine - Lubricate fully - Remove all fuel from engine, fuel lines & tank or add fuel stabiliser

### EVERY 5 HOURS

Check engine oil level, adjust if required  
Check engine air cleaner & foam pre-cleaner, service if required\*

Check engine rotating screen/finger guard, clean if required\*

**\*Service more often under dusty conditions, or where air borne debris is present**

### FIRST MONTH OR 5 HOURS which ever occurs first

Change engine oil  
Check engine air cleaner & foam pre-cleaner, service if req  
Check engine rotating screen/finger guard, clean if required  
Check for loose fasteners, tighten if required  
Check clutch/ brake operation, adjust if required  
Check operation of safety switches, service if required

Check tyre pressures, adjust if required  
Grease stub axles  
Lubricate steering ball joints (rod ends)  
Check mowing attachment cutter blades, bolts, nuts, housing, chute, grass catcher and guards for damage, repair or replace if required

DATE / / HOURS.....DEALER.....

### 3 MONTHS OR 25 HOURS which ever occurs first

Change engine oil if operating under heavy load or high ambient temperature  
Check engine air cleaner & foam pre-cleaner, service if req \*  
Check engine rotating screen/finger guard, clean if required \*  
Check battery condition, service if required  
Check clutch/ brake operation, adjust if required  
Check operation of safety switches and replace if required

Check tyre pressures, adjust if required  
Grease stub axles \*  
Lubricate steering ball joints (rod ends)  
Check for loose fasteners, tighten if required  
Check mowing attachment cutter blades, bolts, nuts, housing, chute, grass catcher and guards for wear or damage, repair or replace if required

**\*Service more often under dusty conditions, or where air borne debris is present**

DATE / / HOURS.....DEALER.....



## 6 MONTHS OR 50 HOURS which ever occurs first

Change engine oil  
If fitted clean engine exhaust spark arrester  
Check engine air cleaner & foam pre-cleaner, service if req \*  
Check engine rotating screen/finger guard, clean if required \*  
Check clutch/ brake operation and pads for wear, adjust or replace if required  
Check tyre pressures, adjust if required  
Check operation of safety switches, service if required  
Check belts for wear or damage, replace if required  
Grease stub axles \*  
Lubricate steering ball joints (rod ends)

Check steering chain and sprockets for wear, adjust if required  
Check mowing attachment electric clutch brake air gap, adjust if req.  
Check mowing attachment electromagnetic clutch/brake for operation, service if required  
Check for loose fasteners, tighten if required  
Check battery condition, service if required  
Check mowing attachment cutter blades, bolts, nuts, housing, chute, grass catcher and guards for wear or damage, repair or replace if required  
#Replace Hydrostatic transaxle oil with 5W50 synthetic oil

\*Service more often under dusty conditions, or where air borne debris is present  
#Service if in commercial and /or heavy useage applications

**DATE     /     /     HOURS.....DEALER.....**

## 9 MONTHS OR 75 HOURS which ever occurs first

Change engine oil if operating under heavy load or high ambient temperature  
Check engine air cleaner & foam pre-cleaner, service if req \*  
Check engine rotating screen/finger guard, clean if required \*  
Check for loose fasteners, tighten if required  
Check clutch/ brake operation, adjust if required  
Check operation of safety switches and replace if required

Check tyre pressures, adjust if required  
Grease stub axles \*  
Lubricate steering ball joints (rod ends)  
Check battery condition, service if required  
Check mowing attachment cutter blades, bolts, nuts, housing, chute, grass catcher and guards for wear or damage, repair or replace if required

\*Service more often under dusty conditions, or where air borne debris is present

**DATE     /     /     HOURS.....DEALER.....**

## 12 MONTHS OR 100 HOURS which ever occurs first

If fitted replace engine oil filter.  
Change engine oil.  
Check engine spark plug, clean, adjust, or replace if required.  
If fitted clean engine exhaust spark arrester.  
Check engine air cleaner & foam pre-cleaner, service if req \*.  
Replace engine air cleaner cartridge, service if required\*.  
Clean engine cooling system\*.  
Check clutch/ brake operation and pads for wear, adjust or replace if req.  
Replace in-line fuel filter.  
Check tyre pressures, adjust if required.  
Grease stub axles \*.

Lubricate steering ball joints (rod ends)  
Check belts for wear or damage, replace if required.  
Check operation of safety switches, service if required.  
Check mowing attachment electromagnetic clutch/brake for operation, service if required  
Check battery condition, service if required.  
Check for loose fasteners, tighten if required  
Check steering chain and sprockets for wear, adjust if required.  
Check mowing attachment cutter blades, bolts, nuts, housing, chute, grass catcher and guards for wear or damage, repair or replace if required.

\*Service more often under dusty conditions, or where air borne debris is present

**DATE     /     /     HOURS.....DEALER.....**

## 15 MONTHS OR 125 HOURS which ever occurs first

Change engine oil if operating under heavy load or high ambient temperature.  
Check engine air cleaner & foam pre-cleaner, service if required \*.  
Check engine rotating screen/finger guard, clean if required \*.  
Check operation of safety switches and replace if required.  
Check clutch/ brake operation, adjust if required.

Grease stub axles \*.  
Lubricate steering ball joints (rod ends)  
Check tyre pressures, adjust if required.  
Check for loose fasteners, tighten if required.  
Check battery condition, service if required.  
Check mowing attachment cutter blades, bolts, nuts, housing, chute, grass catcher and guards for wear or damage, repair or replace if required.

\*Service more often under dusty conditions, or where air borne debris is present

**DATE     /     /     HOURS.....DEALER.....**



## 18 MONTHS OR 150 HOURS which ever occurs first

Change engine oil. If fitted clean engine exhaust spark arrestor. Check engine air cleaner & foam pre-cleaner, service if req*. Check engine rotating screen/finger guard, clean if req *. Check clutch/ brake operation and lining for wear, adjust or replace if req. Check operation of safety switches, service if required. Check tyre pressures, adjust if required. If fitted check mowing attachment brake pad for wear, replace if required.	Check battery condition, service if required. Check for loose fasteners, tighten if required. Check belts for wear or damage, replace if required. Check steering chain and sprockets for wear, adjust if required. Grease stub axles *. Lubricate steering ball joints (rod ends) Check mowing attachment electric clutch brake air gap, adjust if req. Check mowing attachment cutter blades, bolts, nuts, housing, chute, grass catcher and guards for wear or damage, repair or replace if req
--	---

\*Service more often under dusty conditions, or where air borne debris is present

**DATE     /     /     HOURS.....DEALER.....**

## 21 MONTHS OR 175 HOURS which ever occurs first

Change engine oil if operating under heavy load or high ambient temperature. Check engine air cleaner & foam pre-cleaner, service if required *. Check engine rotating screen/finger guard, clean if required *. Check clutch/ brake operation, adjust if required. Check operation of safety switches and replace if required.	Check tyre pressures, adjust if required. Grease stub axles *. Lubricate steering ball joints (rod ends) Check battery condition, service if required. Check for loose fasteners, tighten if required. Check mowing attachment cutter blades, bolts, nuts, housing, chute, grass catcher and guards for wear or damage, repair or replace if required
---	--

\*Service more often under dusty conditions, or where air borne debris is present

**DATE     /     /     HOURS.....DEALER.....**

## 24 MONTHS OR 200 HOURS which ever occurs first

If fitted replace engine oil filter. Change engine oil. Check engine spark plug, clean, adjust, or replace if required. If fitted clean engine exhaust spark arrestor. Check engine air cleaner & foam pre-cleaner, service if req* Check engine air cleaner cartridge, service if required. Clean engine cooling system*. Replace in-line fuel filter. Check clutch/ brake operation and pads for wear, adjust or replace if req. Check operation of safety switches, service if required. Check tyre pressures, adjust if required.	Grease stub axles * Lubricate steering ball joints (rod ends) Check steering chain and sprockets for wear, adjust if req Check belts for wear or damage, replace if required. Check mowing attachment electromagnetic clutch/brake for operation, service if required Check battery condition, service if required Check for loose fasteners, tighten if required Check mowing attachment cutter blades, bolts, nuts, housing, chute, grass catcher and guards for wear or damage, repair or replace if required. Replace Hydro oil with 5W50 synthetic oil
--	---

\*Service more often under dusty conditions, or where air borne debris is present

**DATE     /     /     HOURS.....DEALER.....**

## 27 MONTHS OR 225 HOURS which ever occurs first

Change engine oil if operating under heavy load or high ambient temperature. Check engine air cleaner & foam pre-cleaner, service if req Check engine rotating screen/finger guard, clean if req *. Check clutch/ brake operation, adjust if required. Check operation of safety switches and replace if req. Check tyre pressures, adjust if required.	Grease stub axles *. Lubricate steering ball joints (rod ends) Check battery condition, service if required. Check for loose fasteners, tighten if required. Check mowing attachment cutter blades, bolts, nuts, housing, chute, grass catcher and guards for wear or damage, repair or replace if req.
--	---

\*Service more often under dusty conditions, or where air borne debris is present

**DATE     /     /     HOURS.....DEALER.....**

## 30 MONTHS OR 250 HOURS which ever occurs first

Change engine oil.  
If fitted clean engine exhaust spark arrestor.  
Check engine air cleaner & foam pre-cleaner, service if req\*.  
Check engine rotating screen/finger guard, clean if req \*.  
Check clutch/ brake operation and pads for wear, adjust or replace if req.  
Check operation of safety switches, service if required.  
Check tyre pressures, adjust if required.  
Grease stub axles \*.  
Lubricate steering ball joints (rod ends)

Check steering chain and sprockets wear, adjust if required.  
Check mowing attachment electric clutch brake air gap, adjust if req.  
Check mowing attachment cutter blades, bolts, nuts, housing, chute, grass catcher and guards for wear or damage, repair or replace if required.  
Check belts for wear or damage, replace if required  
Check battery condition, service if required.  
Check for loose fasteners, tighten if required  
#Replace Hydrostatic transaxle oil with 5W50 synthetic oil

\*Service more often under dusty conditions, or where air borne debris is present

#Service if in commercial and /or heavy usage applications

**DATE     /     /     HOURS.....DEALER.....**

## 33 MONTHS OR 275 HOURS which ever occurs first

Change engine oil if operating under heavy load or high ambient temp.  
Check engine air cleaner & foam pre-cleaner, service if required \*  
Check engine rotating screen/finger guard, clean if req \*  
Check clutch/ brake operation, adjust if required  
Check operation of safety switches and replace if required  
Check tyre pressures, adjust if required

Grease stub axles \*  
Lubricate steering ball joints (rod ends)  
Check mowing attachment cutter blades, bolts, nuts, housing , chute, grass catcher and guards for wear or damage, repair or replace if required  
Check battery condition, service if required  
Check for loose fasteners, tighten if required

\*Service more often under dusty conditions, or where air borne debris is present

**DATE     /     /     HOURS.....DEALER.....**

## 36 MONTHS OR 300 HOURS which ever occurs first

If fitted replace engine oil filter Change engine oil  
Check engine spark plug, clean, adjust, or replace if required  
If fitted clean engine exhaust spark arrestor  
Check engine air cleaner & foam pre-cleaner, service if required \*  
Check engine air cleaner cartridge, service if required  
Clean engine cooling system\*  
Replace in-line fuel filter  
Check clutch/ brake operation and lining for ware, adjust or replace if req  
Check operation of safety switches, service if required  
Check tyre pressures, adjust if required  
Grease stub axles \*

Lubricate steering ball joints (rod ends)  
Check steering chain and sprockets wear, adjust if required  
Check belts for wear or damage, replace if required  
If fitted check mowing attachment brake pad for wear, replace if required  
Check battery condition, service if required  
Check for loose fasteners, tighten if required  
Check mowing attachment electric clutch brake air gap, adjust if req.  
Check mowing attachment cutter blades, bolts, nuts, housing, chute, grass catcher and guards for wear or damage, repair or replace if required

\*Service more often under dusty conditions, or where air borne debris is present

**DATE     /     /     HOURS.....DEALER.....**

**We are proud that you have purchased a Cox product and urge you to follow these instructions to obtain the maximum life for your machine.  
If in doubt check with your supplier.**



## COX INDUSTRIES MOWER WARRANTY POLICY

### DEFINITIONS:

"Commercial Use" means all uses other than Domestic use, including any use that is income producing, rental, or is in relation to use in schools, by government departments or charity operators.

"COX INDUSTRIES" means Cox Industries (Australia) Pty Ltd ACN 050 991 038.

"Dealer" means an authorised COX INDUSTRIES dealer a list of which can be found on our website: [www.coxmowers.com.au](http://www.coxmowers.com.au) or freecall us on 1800 330 444.

"Domestic Use" means use for a personal, residential or household (property) purpose.

"Mower" means any ride-on mower manufactured by COX INDUSTRIES.

"Parts" means all parts that can be found in a Mower.

"Warranty Period" means:

- 1) for Domestic Use, a period of two (2) years; or
- 2) for Commercial Use, a period of six (6) months, from the original date of purchase.

### NEW MOWER:

Our goods come with guarantees that cannot be excluded under the Australian Consumer Law. You are entitled to a replacement or refund for a major failure and compensation for any other reasonably foreseeable loss or damage. You are also entitled to have the goods repaired or replaced if the goods fail to be of acceptable quality and the failure does not amount to a major failure.

Nothing in this Warranty purports to modify or exclude the conditions, warranties and undertakings, and other legal rights, under the Australian Consumer Law. This Warranty gives you additional protection for your Mower, and identifies a preferred approach to resolving warranty claims which will be quickest and simplest for all parties, subject to the exclusions, terms and conditions below.

### WARRANTY PERIOD:

COX INDUSTRIES warrants in respect of each new Mower sold that, subject to the exclusions below, for the Warranty Period COX INDUSTRIES or a Dealer will repair or replace free of charge any Parts found to be defective in materials or workmanship under normal use and operating conditions. Other than for major failure, it is at COX INDUSTRIES sole discretion as to whether the Mower or Part is repaired or replaced.

### MOWER PARTS INSTALLED DURING NEW MOWER WARRANTY PERIOD:

Warranty coverage for Parts installed during the new Mower Warranty Period shall consist of the remainder of the new mower Warranty Period or ninety (90) days, whichever ever is greater, provided the installation is performed by an authorised Dealer.

### TO CLAIM THE WARRANTY:

To make a claim under this Warranty, please bring or send the Mower to an authorised Dealer with a copy of your proof of purchase of the Mower. A claim under this Warranty is not formally made unless and until that proof of purchase is provided. This does not detract from your statutory rights.

### WARRANTY REGISTRATION:

The warranty registration card must be completed by the Dealer with the customer at the time of purchase and returned to COX INDUSTRIES within 14 days.

This Warranty is transferable to a subsequent owner of a Mower, in the event of the sale of that product, provided that COX INDUSTRIES is informed in writing within a reasonable time of the sale of the subsequent owner's name and contact details, such notice to be provided to COX INDUSTRIES. The notice should identify the name of the previous owner of the Mower, place and date of purchase, model, make and serial number of the Mower. The effective transfer of this Warranty does not otherwise alter the terms of this Warranty in any way.

### WARRANTY EXCLUSIONS:

This Warranty does not cover:

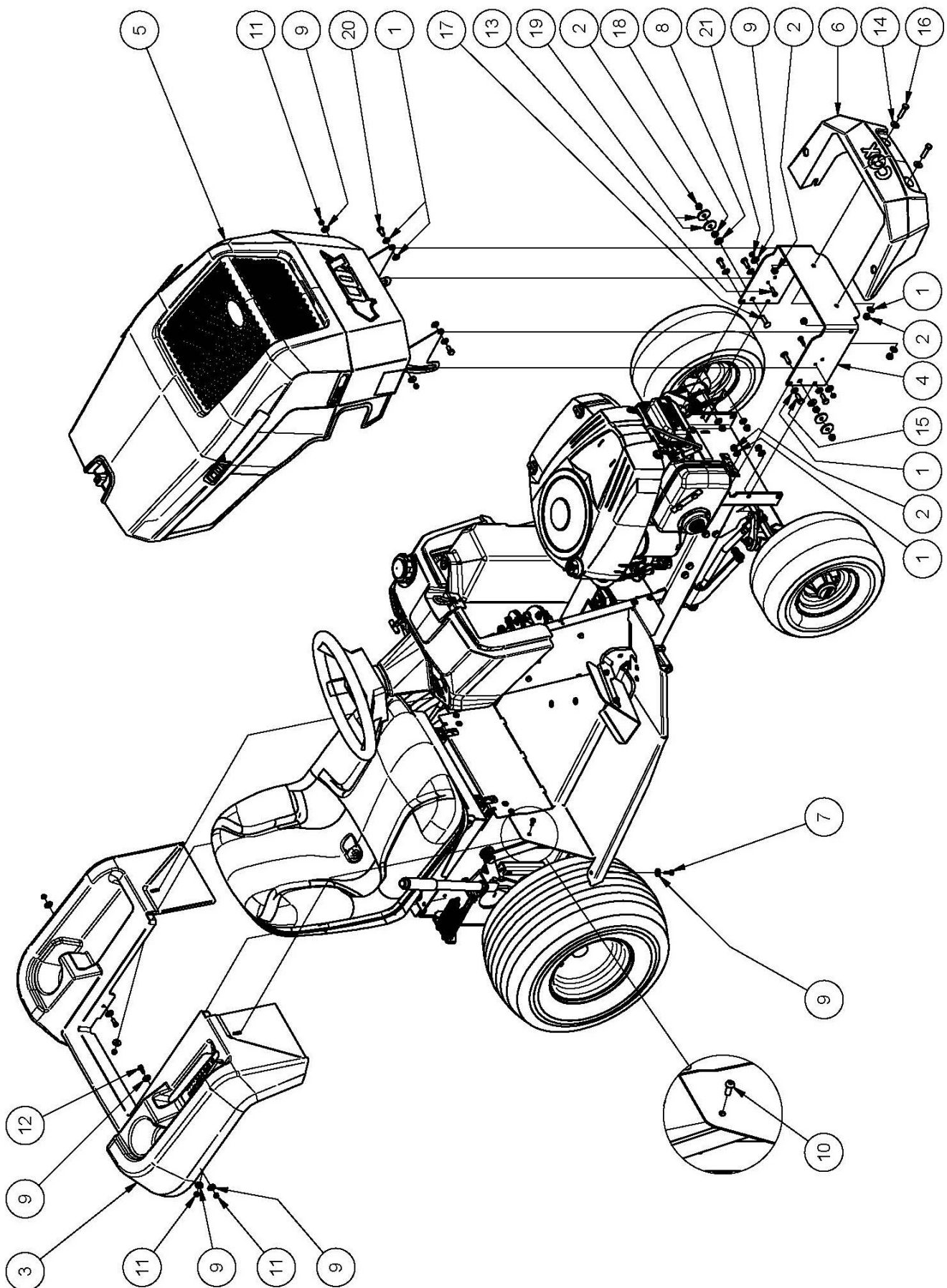
- 1) the costs of rental of another machine or related equipment while repairs are in progress;
- 2) telephone, facsimile or other related communication expenses.
- 3) transportation and insurance charges during transportation of failed Mower or any part thereof;
- 4) the labour, parts, mechanical adjustments or lubricant costs which, in the judgement of COX INDUSTRIES or their Dealer, should have been made as standard maintenance according to the COX INDUSTRIES maintenance schedule;
- 5) the replacement of or service costs relating to replacing and maintaining consumable parts which have ceased working through normal wear and tear such as, but not limited to, normal maintenance parts such as mower discs, blades, bolts and nuts, vee belts, bearings, chains and clutch cones;
- 6) any damage or defect caused by alteration, modification, fitment of a non-genuine part or attachment not approved by COX INDUSTRIES or repair, modification or work carried out on the Mower other than by a Dealer;
- 7) any defect caused by misuse, negligence, accidents or failure to carry out proper maintenance procedures;
- 8) damage caused by continued operation of the machine after it is known to be defective;
- 9) any other expenses incurred by the consumer in making the warranty claim;
- 10) damage caused by incorrect or improper operation (including racing or similar activities), maintenance or not following the instructions or maintenance requirements of the Mower in accordance with the instructions provided with the Mower;
- 11) damage caused by failure to clean or improper cleaning of the product;
- 12) damage caused by adverse external conditions such as thunderstorm activity, acts of God, acts of terrorism, damage caused by vermin, or any other act or circumstance beyond COX INDUSTRIES' control; or
- 13) damage caused by exposure to excessive heat, moisture or dampness, or exposure to abnormally corrosive conditions.

For the avoidance of any doubt, any and all warranties or conditions which are not guaranteed under the Australian Consumer Law or the Australian Competition and Consumer Regulations 2010 and which are not expressly included in this Warranty as additional warranties or conditions are excluded.

To the extent applicable by law, COX INDUSTRIES will not accept liability for costs of labour, postage, cartage or delivery to replace faulty materials or parts, or for any loss, damage or accident directly, indirectly, or consequently suffered by the purchaser, operator or any other person or property as a result of such faults whether due to defective materials or workmanship or otherwise.

**Due to COX INDUSTRIES on-going commitment to product improvement, we reserve the right to change at any time, product specifications, configurations and company policies.**

## PARTS LIST: A16915G BODY - BONNET & MUDGUARD



## PARTS LIST: A16915G BODY - BONNET & MUDGUARD

ITEM	PART NUMBER	DESCRIPTION	QTY
1	W08MN	Washer, Flat, Bright, M 8x 17x1, 2	14
2	NM8NT	Nut, Hex, Nyloc, Thin, M 8, Pc6	10
3	A168022	Mudguard, Rear	1
4	A163066R	Bar, Bumper, Red	1
5		Sub-Assy, Bonnet, Sman 4500, B&S, 19.0	1
6	A163014	Bumper, Front	1
7	SPPK6X20	Screw, Pan, Posi3, K 6x 20	2
8	W10MN	Washer, Flat, Bright, M10x 21x1.6	2
9	W041216	Washer, Flat, Bright, 1/4"X3/4"X16g	12
10	BHSSM6X16	Screw, Button, Hex Soc, M 6x 16, Pc10.9	2
11	NM6NT	Nut, Hex, Nyloc, Thin, M 6, Pc6	6
12	SH0616M	Screw, Hex, M 6x 16, Pc4.6	2
13	SH0620M	Screw, Hex, M 6x20, Pc4.6	2
14	W05M202	Washer, Flat, Bright, 5/16"X3/4"X14g	2
15	SH0820M	Screw, Hex, M 8x 20, Pc8.8	4
16	B0835M	Bolt, Hex, M8 X 35, Pc8.8	2
17	BCHSNM8X30	Bolt, Cup, Sq Neck, M8 X 30 Pc4.6.	2
18	NHM8	Nut, Hex, M8	2
19	W052003	Washer, Flat, Black, 5/16"X1-1/4"X3	4
20	SH0816M	Screw, Hex, M 8x 16, Pc8.8	2
21	NHM6	Nut, Hex, M 6, Pc5	2

This exploded view diagram illustrates the assembly of a go-kart chassis. The components are numbered as follows:

- 1:** Various structural plates and brackets, including the main side plates, front cross-member, and rear cross-member.
- 2:** Bolts and nuts used for securing the side plates and other structural components.
- 3:** A central support plate or bracket.
- 4:** A rear cross-member plate.
- 5:** A steering linkage assembly, including a steering knuckle (5.1), a steering arm (5.2), and a steering rack (5.3).
- 6:** A component of the steering linkage, likely a tie rod end.
- 7:** A bracket for the steering linkage.
- 8:** A bush or spacer.
- 9:** A component of the rear suspension, likely a shock absorber or strut.
- 10:** A rear suspension component, likely a shock absorber or strut.
- 11:** A rear suspension component, likely a shock absorber or strut.
- 12:** A seat.
- 13:** A component of the seat mounting, likely a bracket or plate.
- 14:** A component of the seat mounting, likely a bracket or plate.
- 15:** A component of the seat mounting, likely a bracket or plate.
- 16:** A component of the seat mounting, likely a bracket or plate.
- 17:** A component of the seat mounting, likely a bracket or plate.
- 18:** A component of the seat mounting, likely a bracket or plate.
- 19:** A component of the seat mounting, likely a bracket or plate.
- 20:** A component of the seat mounting, likely a bracket or plate.

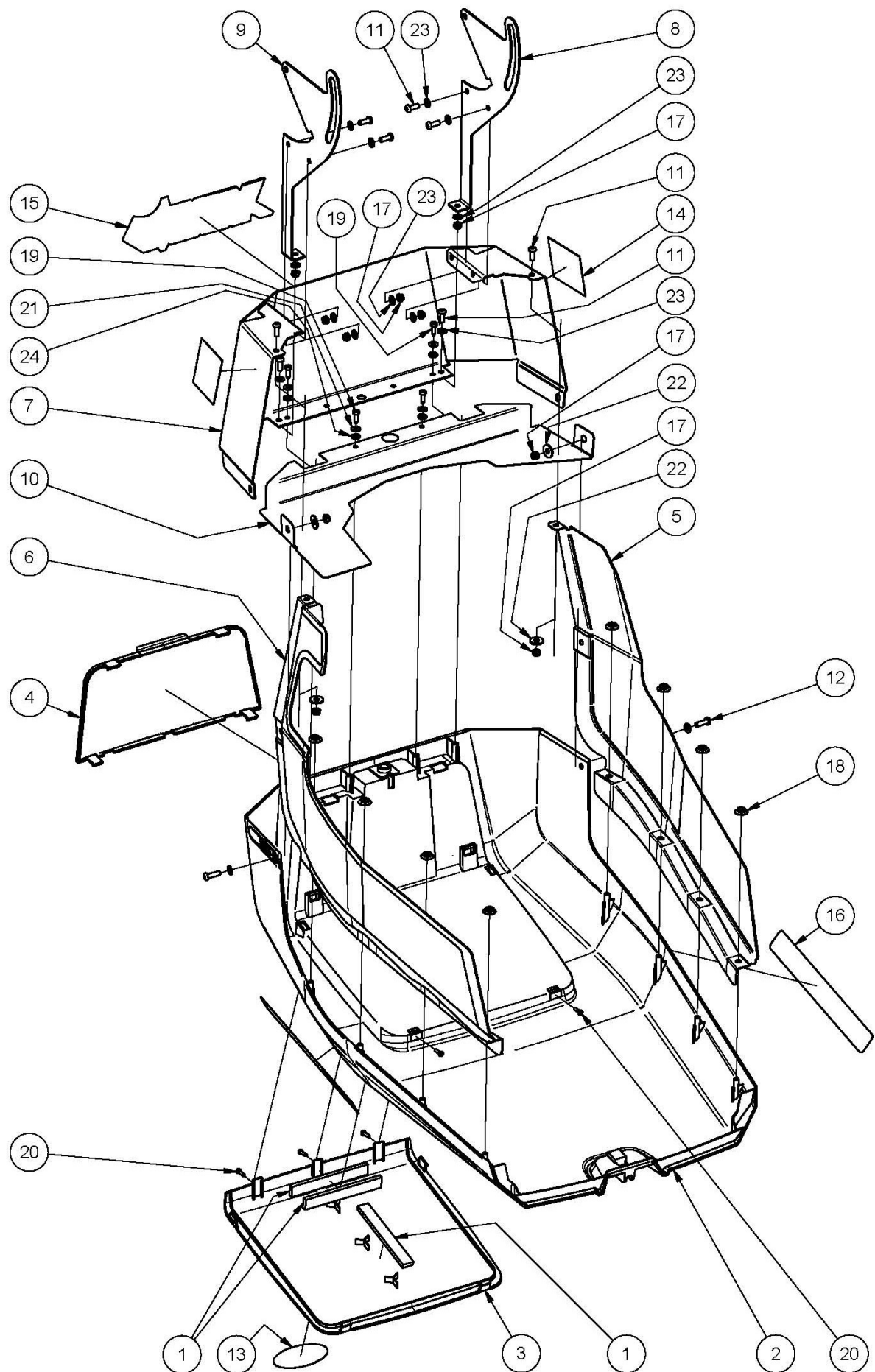
The diagram shows the assembly of the chassis, including the engine, transmission, rear axle, and front suspension. The seat is shown separately, indicating its position relative to the chassis. A detailed inset shows the front suspension assembly, including the steering knuckle, tie rod, and shock absorber.

## PARTS LIST: A16915G BODY - SEAT

ITEM	PART NUMBER	DESCRIPTION	QTY
1	W08MN	Washer, Flat, Bright, M 8x 17x1.2	6
2	NM8NT	Nut, Hex, Nyloc, Thin, M 8, Pc6	6
3	A169137B	Frame, Slide, Seat	1
4	A169135R	Cover, Transaxle	1
5	A126052	Kit, Adjust, Seat, 4" Travel	1
5.1		Spacer, 5/16"X1-1/4"X1/4", Plastic, Black	4
5.2		Runner, Seat	1
5.3		Adjuster, Seat, 4" Travel	1
6	N05CN	Nut, Hex, Nyloc, Thick, Unc, 5/16", Gr5	4
7	BCHSNM8X25	Bolt, Cup, Sq Neck, M8 X 20 Pc4.6	4
8	NHCM8	Nut, Hex, Conelok, M 8, Pc8	4
9	W08MN	Washer, Flat, Bright, M 8x 17x1.2	4
10	89073	Strip, Tape 125mm Long	2
11	A168143B	Mount, Seat, Black	1
12	A120850	Seat	1
13	SH0512C	Screw, Hex, Unc, 5/16"X3/4", Gr5	4
14	W051218	Washer, Flat, Bright, 5/16"X3/4"X18g	4
15	WS050216	Washer, Lock, Spring, 5/16"X1/8"X1/16"	4
16	SP1PNCMSM	Switch, Plunger, 1 Pole, Nc, Snap Mtg	1
17	A163060	Spring, Compression, Conical, Seat, Heavy	2
18	A168231	Cap, Spring, Seat	2
19	W05M202	Washer, Flat, Bright, 5/16"X3/4"X14g	2
20	SH0820M	Screw, Hex, M 8x 20, Pc8.8	6



## PARTS LIST: A16915G BONNET

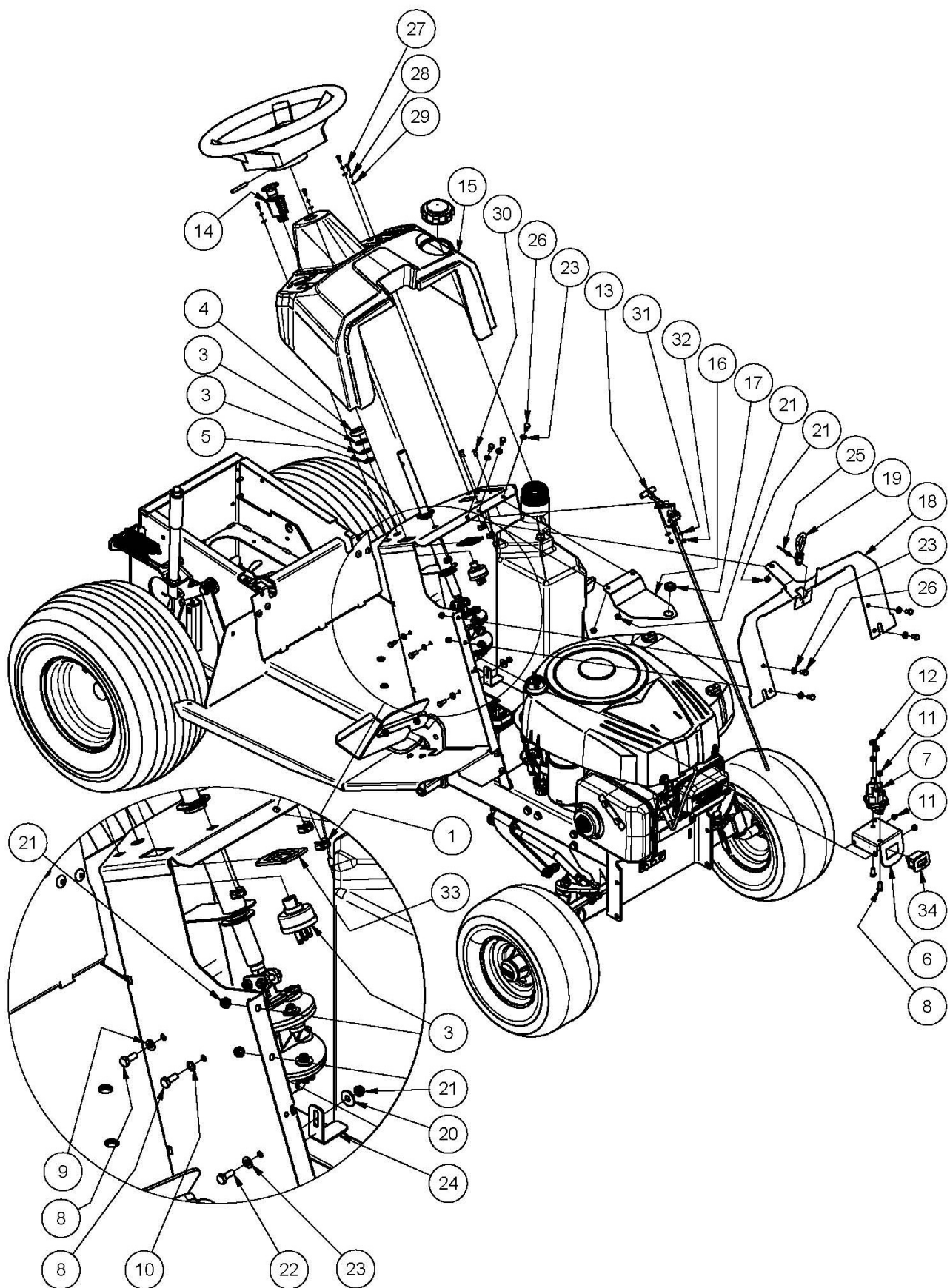




## PARTS LIST: A16915G BONNET

ITEM	PART NUMBER	DESCRIPTION	QTY
1	89073	Strip, Tape 125mm Long	3
2	A168020	Cowl, Bonnet	1
3	A168026	Grill, Bonnet, Top	1
4	A168028	Grill, Bonnet, Front	1
5	A168033B	Mesh, Side, Left	1
6	A168035B	Mesh, Side, Right	1
7	A168121R	Nose, Bonnet	1
8	A168123R	Stay, Bonnet, Left	1
9	A168125R	Stay, Bonnet, Right	1
10	A168129B	Baffle, Air, Hot, Bonnet, B&S, 19.0	1
11	BHSSM6X16	Screw, Button, Hex Soc, M 6x 16, Pc10.9	8
12	BHSSM6X20	Screw, Button, Hex Soc, M 6x 20, Pc10.9	2
13	DEC180	Badge, Bonnet	1
14	DEC240	Decal, Proudly Australian	2
15	DEC330	Decal, Cox, 250x 80, Red	1
16	DEC333	Decal, Stockman 4500, Cox, Bonnet	2
17	NM6NT	Nut, Hex, Nyloc, Thin, M 6, Pc6	10
18	NTF6.3	Nut, Hex Wash, Self-Thread, 6.3	8
19	SPPK5X16	Screw, Pan, Pozi2, K 5x 16	4
20	ST0610B	Screw, Pan, Selftap, Ph2, #6-20x 5/8"	5
21	W030820	Washer, Flat, Bright, 3/16" X 1/2"X 20 G	4
22	W041216	Washer, Flat, Bright, 1/4"X3/4"X16g	4
23	W06MN	Washer, Flat, Bright, M 6x 12.5x1.2	14
24	WSR12	Washer, Seal, Epdm Rubber	4

## PARTS LIST: A16915G BODY - CONSOLE



## PARTS LIST: A16915G BODY - CONSOLE

ITEM	PART NUMBER	DESCRIPTION	QTY
1	NCM4X1.6X9.5	Nut, Cage, M 4, 1.6 Panel, 9.5sq Hole	4
2	13012	Bush, Flanged, Nylon, 19idx22odx45l	2
3	13125	Switch, Key, 3 Posn, Magneto, 6 Term	1
4	A120870	Bezel, Switch, Key	1
5	A120872Z	Washer, D, 16.1x24.0x2.5	1
6	A168009Z	Bracket, Solenoid + Hourmeter	1
7	AM159	Solenoid	1
8	SH0616M	Screw, Hex, M 6x 16, Pc4.6	4
9	W06MN	Washer, Flat, Bright, M 6x 12.5x1.2	1
10	WM6S	Washer, Lock, Int Tooth, M 6	1
11	NM6NT	Nut, Hex, Nyloc, Thin, M 6, Pc6	4
12	N04C	Nut, Hex, Unc, 1/4", Gr5	2
13	A168111	Control, Speed, Engine, B&S, L= 670	1
14	A168117	Switch, Pto, Push-Pull, Nodtdt, Yellow	1
15	A168024	Dash, Console	1
16	A168131B	Bracket, Tank, Fuel	1
17	80037	Grommet	1
18	A168133B	Strut, Console	1
19	96114	Strap, Bonnet	1
20	W041216	Washer, Flat, Bright, 1/4"X3/4"X16g	1
21	NM6NT	Nut, Hex, Nyloc, Thin, M 6, Pc6	8
22	SH0616M	Screw, Hex, M 6x 16, Pc4.6	1
23	W06MN	Washer, Flat, Bright, M 6x 12.5x1.2	8
24	90139	Clamp, Battery	1
25	PR04M4.8	Rivet, Blind, Truss, Mon, 4.0x 8.4, 73ms 5-3	1
26	SH0612M	Screw, Hex, M 6x 12, Pc4.6, Znpl	7
27	SPM4X12	Screw, Pan, X Recess, M 4 X 12, Znpl	4
28	WSM4X1.2X1.2	Washer, Lock, Spring, M 4x1.2x1.2, Znpl	4
29	W04MN	Washer, Flat, Bright, M 4x 9x 0.8, Znpl	4
30	BHSSM5X12	Screw, Button, Hex Soc, M 5 X 12, Pc10.9, Znpl	2
31	W05MN	Washer, Flat, Bright, M 5x 10x1.0, Znpl	2
32	NM5NT	Nut, Hex, Nyloc, Thin, M5, Pc6, Znpl	2
33	A102190	Ring, Retainer, Switch, Pto	1
34	A163081	Meter, Hour	1

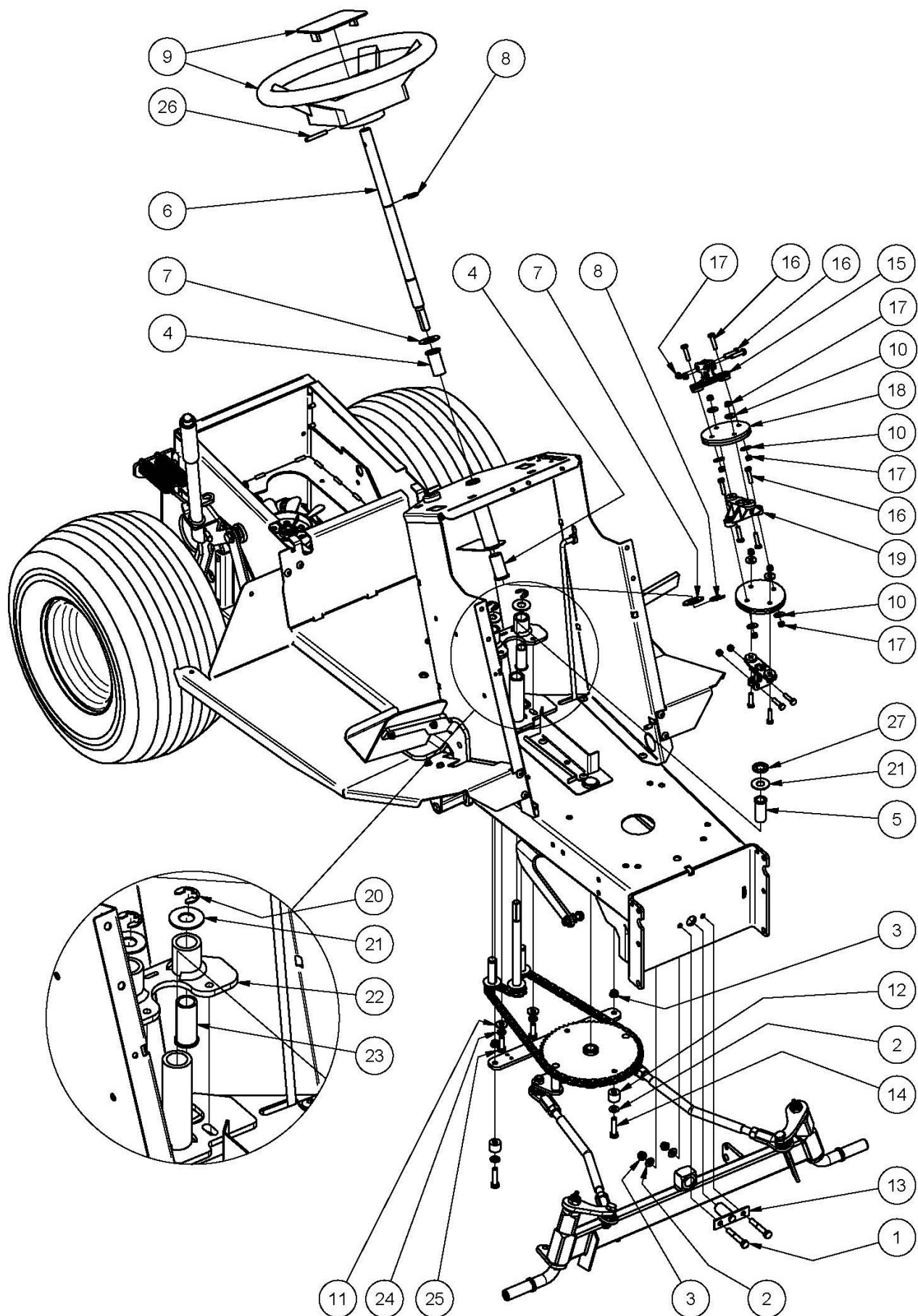
8 September 2015



## PARTS LIST: A16915G CONTROLS

ITEM	PART NUMBER	DESCRIPTION	QTY
1	W08MN	Washer, Flat, Bright, M 8x 17x1, 2	18
2	NM8NT	Nut, Hex, Nyloc, Thin, M 8, Pc6	10
3	A169183Z	Rod, Brake, Park	1
4	A111050Z	Bush, Pin, Locking, Unc, 5/16"	1
5	W051218	Washer, Flat, Bright, 5/16"X3/4"X18g	1
6	14038	Knob	1
7	RP04	Pin, 'R'	3
8	W10MN	Washer, Flat, Bright, M10x 21x1.6	5
9	NM10NT	Nut, Hex, Nyloc, Thin, M10, Pc6	1
10	W041216	Washer, Flat, Bright, 1/4"X3/4"X16g	2
11	BHSSM6X16	Screw, Button, Hex Soc, M 6x 16, Pc10.9	4
12	NM6NT	Nut, Hex, Nyloc, Thin, M 6, Pc6	4
13	SH0616M	Screw, Hex, M 6x 16, Pc4.6	2
14	SH0820M	Screw, Hex, M 8x 20, Pc8.8	4
15	A168087Z	Spacer, 8.5id, 20od, L=16	1
16	NHM8	Nut, Hex, M8	1
17	W052003	Washer, Flat, Black, 5/16"X1-1/4"X3	1
18	W06MN	Washer, Flat, Bright, M 6x 12.5x1.2	10
19	B0625M	Bolt, Hex, M6x25, Gr 8.8	1
20	A169189R15G	Bridge, Suspension, Mower, Hydro, Red	1
21	NF06CN	Nut, Hex, Nyloc, Thick, Unc, 3/8, Gr5	1
22	W061216	Washer, Flat, Bright, 3/8"X3/4"X16g	3
23	B0860M	Bolt, Hex, M 8x 60, Pc8.8	5
24	A168165Z	Pivot, Pedal, Drive	1
25	AM230	Bush - Plastic	4
26	A168179Z	Pivot, Pedal, Brake	1
27	A168177R	Lever, Pedal, Clutch/Brake	1
28	A169221R	Rest, Foot, Pedal, Drive, Hydro	1
29	BHSSM6X20	Screw, Button, Hex Soc, M 6x 20, Pc10.9	3
30	A169161Z	Link, Drive, Hydro	1
31	RP01	Pin, 'R'	3
32	A169171Z	Lever, Actuation, Brake	1
33	B1045M	Bolt, Hex, M10x 45, Pc8.8	1
34	NHM10	Nut, Hex, M10, Pc8	1
35	SH0830M	Screw, Hex, M8x30, Pc8.8	1
36	A111018	Spring, Extension, Foot Brake	1
37	A169173Z	Link, Clutch, Longitudinal	1
38	RE516INT	End, Rod, Stamp, Unf, 5/16" Int	1
39	AM328	Pivot Bush, Lever	1
40	A169175Z	Crank, Clutch	1
41	B0870M	Bolt, Hex, M 8 X 70, PC8.8	1
42	RE38INTSTUD	End,Rod,Stamp,Unf,3/8"Int,Stud Ball	1
43	A169181Z	Link,Clutch,Transverse,Adjust	1
44	N06FC	Nut,Hex,Conelok,Unf,3/8",Gr5	1
45	A169227Z	Link,Disengage,Hydro	1
46	WG12X15	Grommet	1
47	NFM6	Nut,Hex,Flange,Serated,M 6,Pc8	1

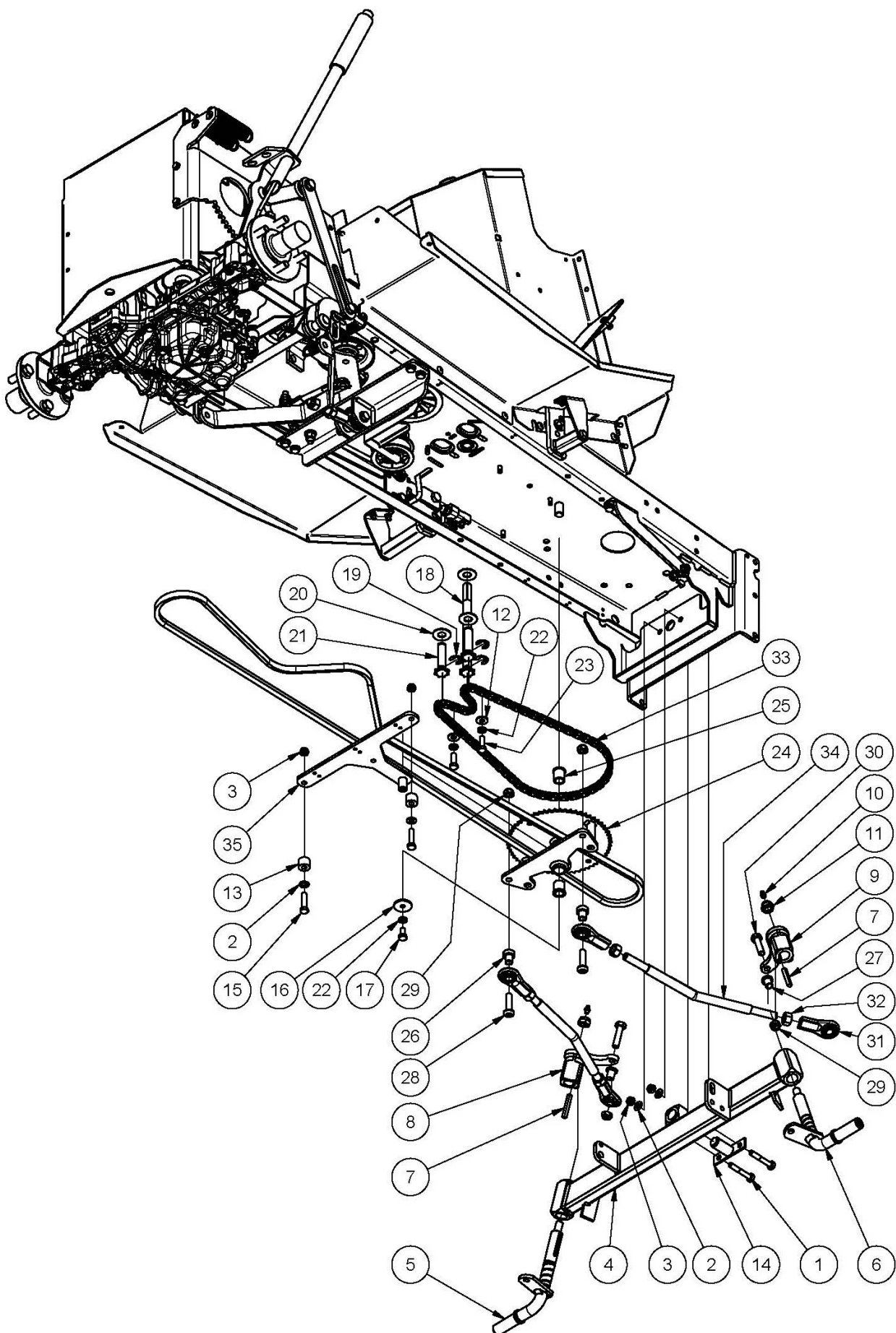
## PARTS LIST: A16915G STEERING UPPER



## PARTS LIST: A16915G STEERING UPPER

ITEM	PART NUMBER	DESCRIPTION	QTY
1	B0850M	Bolt, Hex, M 8x 50, Pc8.8	2
2	W08MN	Washer, Flat, Bright, M 8x 17x1, 2	4
3	NM8NT	Nut, Hex, Nyloc, Thin, M 8, Pc6	4
4	13012	Bush, Flanged, Nylon, 19idx22odx45l	2
5	AM017C1	Steering Shaft Bush With Collar	2
6	A168078Z	Shaft, Steering, Upper	1
7	W122414	Washer, Flat, Bright, 3/4"X1-1/2"X 14g	2
8	C02	Circlip, Ext, 'E' Type	2
9	SW14H	Wheel, Steering, 14", 02hub+Cover	1
10	W041216	Washer, Flat, Bright, 1/4"X3/4"X16g	8
11	W05M202	Washer, Flat, Bright, 5/16"X3/4"X14g	2
12	A168087Z	Spacer, 8.5id, 20od, L=16	2
13	13242	Pin, Pivot, Front Axle	1
14	B0835M	Bolt, Hex, M8 X 35, Pc8.8	2
15	A126174Z	Yoke, Joint, Universal, Steering	2
16	B0625M	Bolt, Hex, M6x25, Gr 8.8	12
17	NHCM6	Nut, Hex, Conelok, M 6, Pc8	12
18	AM25399J	Disc, Universal Joint	2
19	A168076	Cross, Joint, Steering	1
20	C05	Circlip, Ext, "E"Type	2
21	W092016	Washer, Flat, Bright, 9/16" X 1+1/4" X 16g	2
22	A168072Z	Tensioner, Chain, Steering	1
23	AM017C1	Steering Shaft Bush With Collar	2
24	WS050216	Washer, Lock, Spring, 5/16"X1/8"X1/16"	2
25	SH0825M	Screw, Hex, M 8x 25, Pc8.8	2
26	DP10	Pin, Roll, Spring, 1/4"X1-3/4"	1
27	89100	Fastener, Pushon, Round, 1/4"	1

## PARTS LIST: A16915G STEERING LOWER

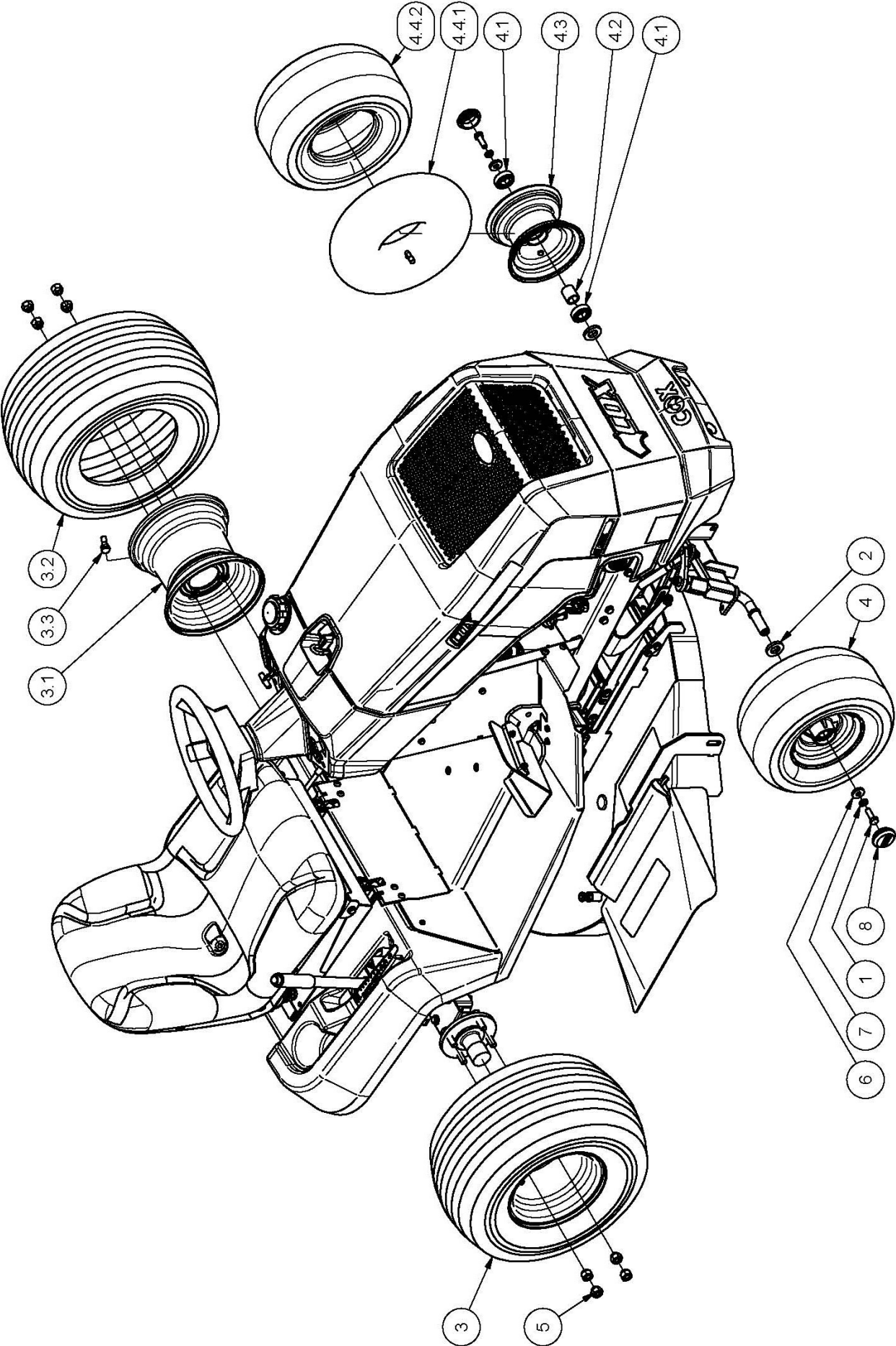




## PARTS LIST: A16915G STEERING LOWER

ITEM	PART NUMBER	DESCRIPTION	QTY
1	B0850M	Bolt, Hex, M 8x 50, Pc8.8	2
2	W08MN	Washer, Flat, Bright, M 8x 17x1, 2	4
3	NM8NT	Nut, Hex, Nyloc, Thin, M 8, Pc6	4
4	A168096R	Beam, Axle, Front	1
5	A168099Z	Axle, Stub, M10, 107.5 Deg, Left	1
6	A168101Z	Axle, Stub, M10, 107.5 Deg, Right	1
7	14008	Key	2
8	A168092R	Arm, Steering, Left, Red	1
9	A168094R	Arm, Steering, Right, Red	1
10	GNTF3	Nipple, Grease, Straight	2
11	NM12NT	Nut, Hex, Nyloc, Thin, M12, Pc6	2
12	W05M202	Washer, Flat, 5/16"X3/4"X14g	2
13	A168087Z	Spacer, 8.5id, 20od, L=16	2
14	13242	Pin, Pivot, Front Axle	1
15	B0835M	Bolt, Hex, M8 X 35, Pc8.8	2
16	W052003	Washer, Flat, Black, 5/16"X1-1/4"X3	1
17	SH0816M	Screw, Hex, M 8x 16, Pc8.8	1
18	A168229Z	Shaft, Steering, Lower, 06b-8x195	1
19	C05	Circlip, Ext, "E"Type	3
20	W092016	Washer, Flat, Bright, 9/16" X 1+1/4" X 16g	3
21	A168074Z	Shaft, Steering, Idler	2
22	WS050216	Washer, Lock, Spring, 5/16"X1/8"X1/16"	1
23	SH0825M	Screw, Hex, M 8x 25, Pc8.8	2
24	A168083Z	Crank, Steering	1
25	A120685	Bush, Pivot, Tensioner	2
26	A168185Z	Sleeve, Spacer, 1/2"Rod End	2
27	15173	Sleeve, Spacer, 3/8"-1/2"Rod End	2
28	BHSSM10X40	Screw, Button, Hex Soc, M10x 40, Pc10.9	2
29	NHCM10	Nut, Hex, Conelok, M10, Pc8	4
30	B1040M	Bolt, Hex, M10x40, Pc8	2
31	RE12INT	End, Rod, Stamp, Unf, 1/2" Int	4
32	N08F	Nut, Hex, Unf, 1/2", Gr5	4
33	A168080	Chain, Roller	1
34	A168090Z	Rod, Steering, Bent, Unf, 1/2", L=315	2
35	A168085Z	Bracket, Pivot, Steering, Bottom	1

**PARTS LIST: A16915G WHEELS**



## PARTS LIST: A16915G WHEELS

ITEM	PART NUMBER	DESCRIPTION	QTY
1	SH1030M10.9	Screw, Hex, M10x 30, Pc10.9	2
2	W203806	Washer, Flat, 20x38x6	4
3	A120865	Wheel	2
3.1	A120897S	Rim	1
3.2	TT18X950-8SS	Tyre, 18x 950- 8, 4PLY	1
3.3	VSS	Valve, Tubeless	1
4	A102120	Sub-Assy, Front Wheel	2
4.1	BB204212N	Bearing, Ball	2
4.2	AM021	Sleeve, Spacer, Bearing, L=30	1
4.3	13009	Rim	1
4.4	TT650X6	Tyre & Tube	1
4.4.1	STU650X6	Tube	1
4.4.2		Tyre	1
4.4.3		Core, Valve	1
4.4.4		Cap, Valve	1
5	NHWM12X1.5	Nut, Hex, Wheel M12x1.5, 60 Deg	8
6	W102705	Washer, Flat, Black, 10.5x27x5	2
7	WSM10X3.66X2.69	Washer, Lock, Spring, M10x3.66x2.69	2
8	AM07099C	Cap, Hub, 42dia, Black	2

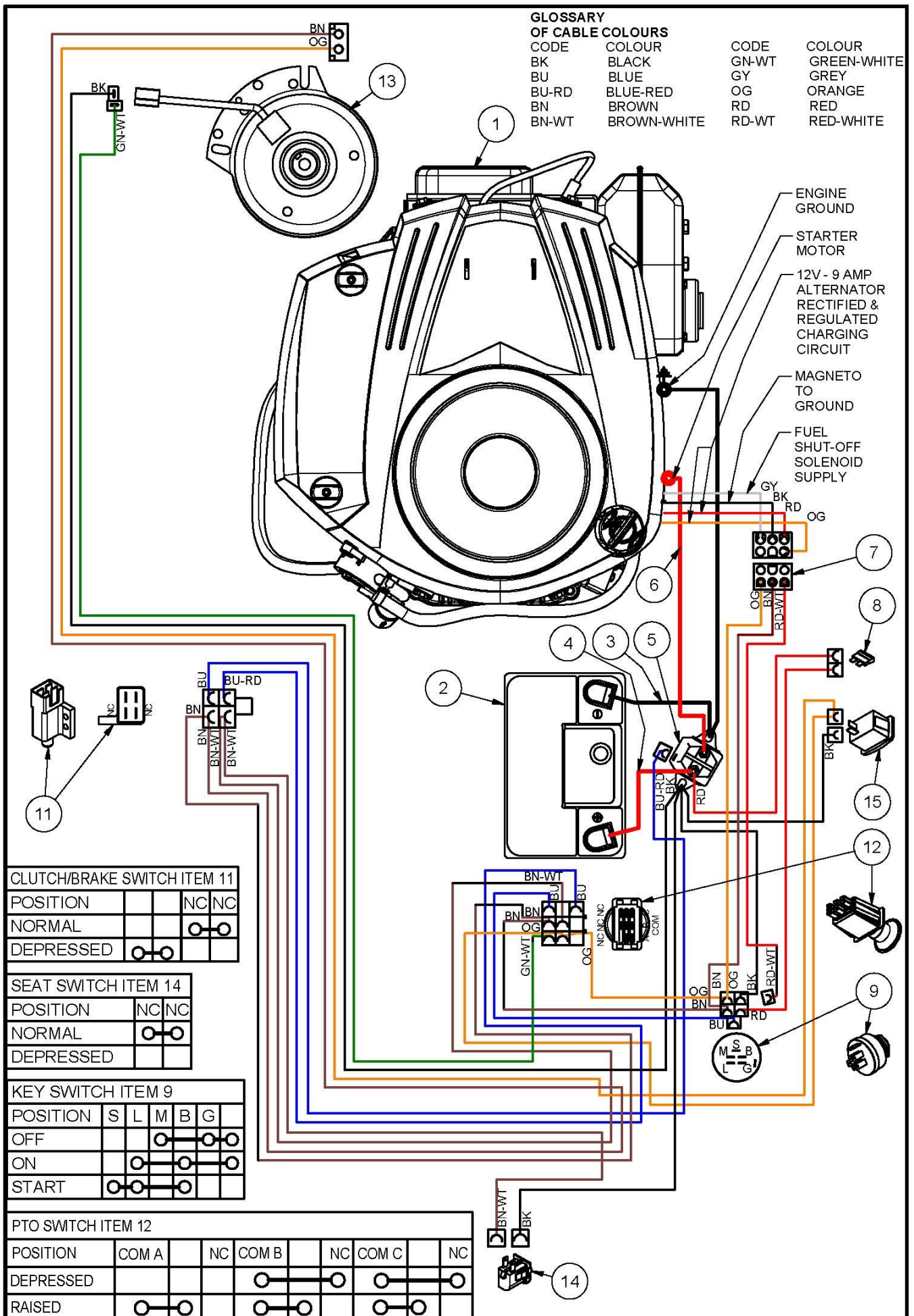
8 September 2015



## PARTS LIST: A16915G ENGINE ANCILLARY

ITEM	PART NUMBER	DESCRIPTION	QTY
1	W08MN	Washer, Flat, Bright, M 8x 17x1 , 2	10
2	NM8NT	Nut, Hex, Nyloc, Thin, M 8 ,Pc6	7
3	A168032	Tank, Fuel	1
4	CF01	Cap, Fuel	1
5	AM294	Grommet, Fuel Tap	1
6	AM293	Petrol Tap	1
7	A168111	Control, Speed, Engine, B&S, L= 670	1
8		Battery, 12v ,mfu1, 240cca	1
9		Engine, 19.0hp, 1cyl, Elec, B&S, Blk, 33r877	1
10	SH0616M	Screw, Hex, M 6x 16, Pc4.6	2
11	SH0820M	Screw, Hex, M 8x 20, Pc8.8	2
12	SH0816M	Screw, Hex, M 8x 16, Pc8.8 (35" Cut)	5
	SH0820M	Screw, Hex, M 8x 20, Pc8.8 (42" Cut)	5
13	NHM6	Nut, Hex, M 6 , Pc5	2
14	WS050216	Washer, Lock, Spring, 5/16"X1/8"X1/16"	4
15	A169229R	Reinforce, Mount, Engine (35" Cut)	1
	A169233R	Reinforce, Mount, Engine (42" Cut)	1
16	A169223Z	Guide, Belt, Drive, Front	2
17	A168147Z	Tang, Clutch/Brake	1
18	A168040	Pulley, Engine	1
19	AM175	Key	1
20	A120516	Clutch/Brake, Electromagnet	1
21	B0756F	Bolt, Hex, Unf, 7/16x3-1/2", Gr5	1
22	W071416	Washer, Flat, Bright, 7/16"X7/8"X16g	2
23	WS071008	Washer, Lock, Spring, 7/16"X5/32"X1/8"	1
24	W05SE	Washer, Lock, Ext Tooth, 5/16"	3
25	B0840M	Bolt, Hex, M8x40, Pc8 (35" Cut)	4
	B0845M	Bolt, Hex, M8x45, Pc8 (42" Cut)	4
26	NHCM8	Nut, Hex, Conelok, M 8 , Pc8	4
27	BHSSM5X12	Screw, Button, Hex Soc, M 5 X 12, Pc10.9	2
28	W05MN	Washer, Flat, Bright, M 5x 10x1.0	2
29	NM5NT	Nut, Hex, Nyloc, Thin, M5, Pc6	2
30	14107	Line, Fuel, L=180	1

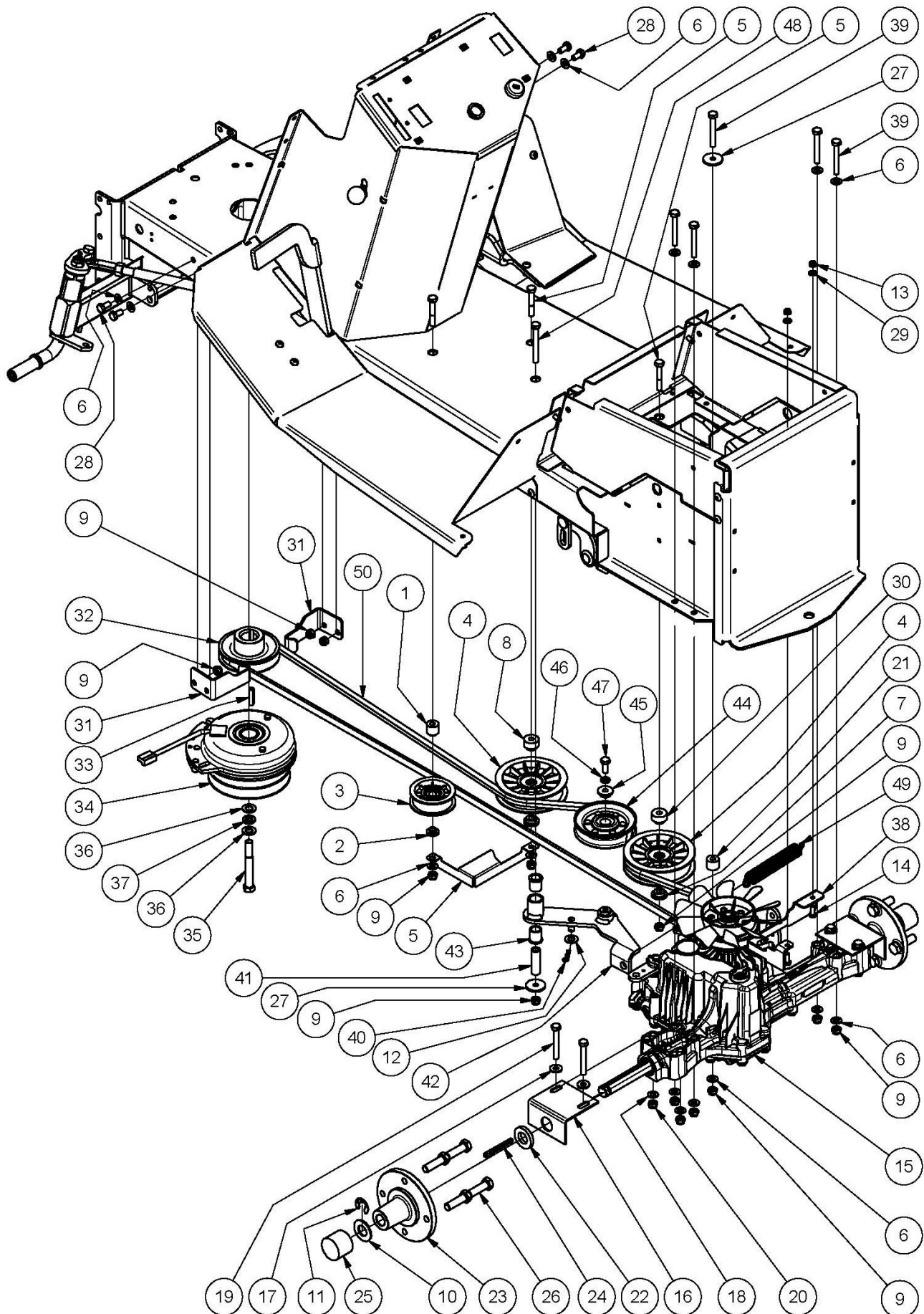
# WIRING DIAGRAM - A16914K/A16915G



## PARTS LIST: A16915G WIRING

ITEM	PART NUMBER	DESCRIPTION	QTY
1		Engine, 19.0 Hp, 1 Cyl, Elec, B&S, Blk, 331877	1
2		Battery, Automotive, 12v, Mfu1, 9pl, 240cca	1
3	15235	Lead, Battery, Black,3term,8-570-6-330-6	1
4	13115	Lead, Battery, Red, L=400	1
5	AM159	Soleniod	1
6	AM265	Lead, Battery, Red, L=490	1
7	A168113	Harness, Wiring, Main	1
8		Fuse, Blade, 15 Amp, Blue	1
9	13125	Switch, Key, 3 Posn, Magneto, 6 Term	1
10	A168114	Lead, Wiring, Switch, Foot	1
11	14019	Switch, Plunger	1
	14020	Cover, Switch	1
12	A168117	Switch, Pto	1
13	A120516	Clutch/Brake, Elecmagnet	1
14	SP1PNCMS	Switch, Plunger	1
15	A163081	Meter, Hour	1

## PARTS LIST: A16915G DRIVE





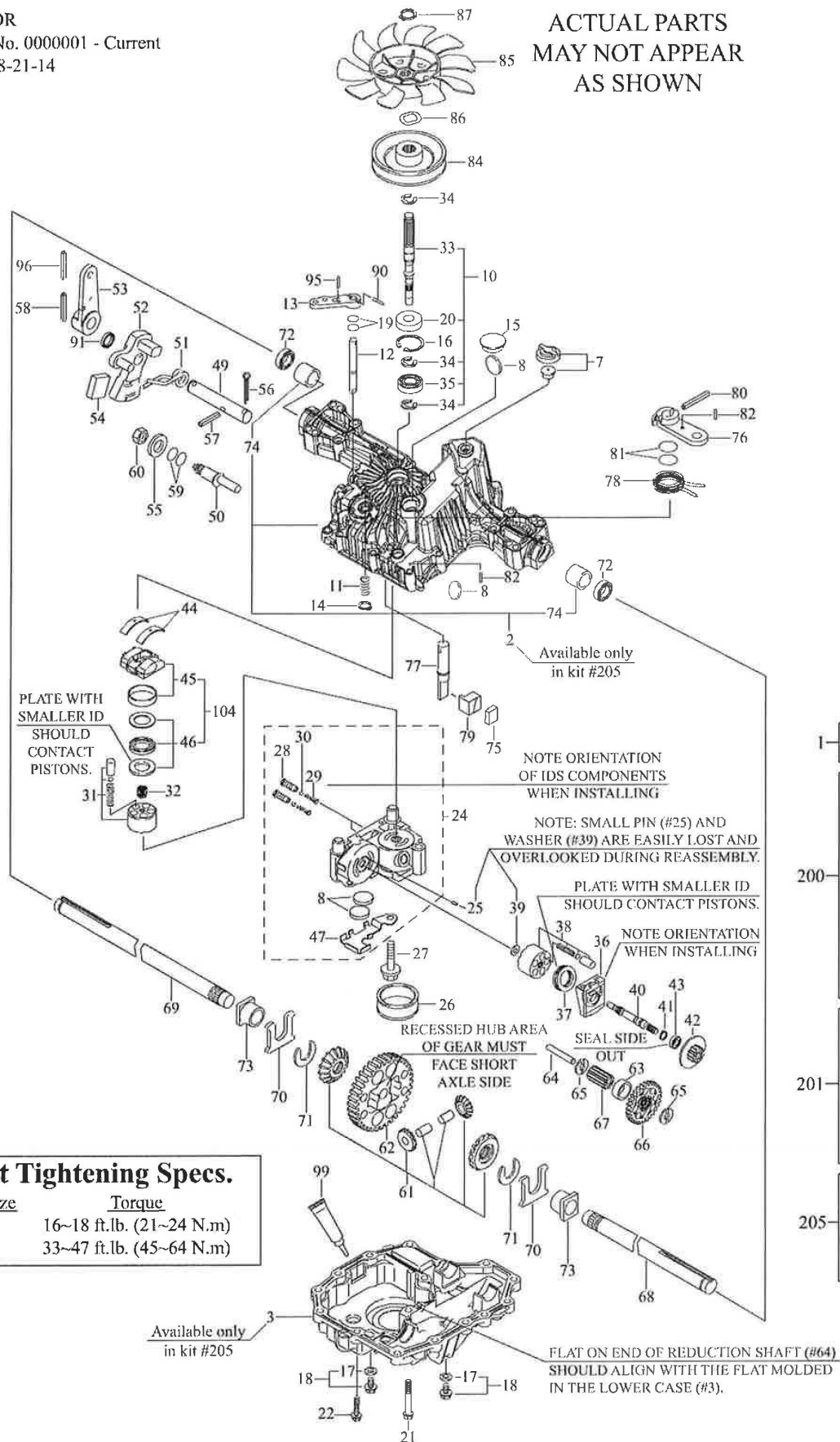
## PARTS LIST: A16915G DRIVE

ITEM	PART NUMBER	DESCRIPTION	QTY
1	90293	Boss, Idler, 12dia, 16high	1
2	90294	Boss, Idler, 12dia, 3high	1
3	PIFB126598A	Idler, Flat, Flg, Brg, Sealed, 12idx 65od	1
4	PIFBB02	Idler, Flat, Flg, Brg, Sealed, 17x4.00"Od	2
5	A169232	Guide, Belt, Drive, Middle	4
6	W08MN	Washer, Flat, Bright, M 8x 17x1,2	15
7	14025	Boss, Idler, 17dia, 3high	2
8	A102125Z	Boss, Idler, 17 Dia, 12 High	1
9	NM8NT	Nut, Hex, Nyloc, Thin, M 8, Pc6	13
10	W122414	Washer, Flat, Bright, 3/4"X1-1/2"X 14g	2
11	C02	Circlip, Ext, 'E' Type	2
12	W10MN	Washer, Flat, Bright, M10x 21x1.6	1
13	NM6NT	Nut, Hex, Nyloc, Thin, M 6, Pc6	2
14	SH0616M	Screw, Hex, M 6x 16, Pc4.6	2
15	A169012	Transaxle, Hydro, TTC, K46DR	1
16	14022	Bracket, Thrust, Hub	2
17	W05M202	Washer, Flat, Bright, 5/16"X3/4"X14g	4
18	W08MN	Washer, Flat, Bright, M 8x 17x1,2	4
19	B0860M	Bolt, Hex, M 8x 60, Pc8.8	4
20	NM8NT	Nut, Hex, Nyloc, Thin, M 8, Pc6	4
21	A168087Z	Spacer, 8.5id, 20od, L=16	1
22	W203806	Washer, Flat, 20x38x6	2
23	A169205	Adaptor, Wheel	2
24	14126	Key	2
25	14075	Cap, Hub, Rear Wheel	2
26	SH1240M1.5	Screw, Hex, M12x1.5x 40, Pc8.8	8
27	W052003	Washer, Flat, Black, 5/16"X1-1/4"X3	1
28	SH0816M	Screw, Hex, M 8x 16, Pc8.8	4
29	W06MN	Washer, Flat, Bright, M 6x 12.5x1.2	2
30	A102386Z	Boss, Idler, 17dia, 10.5high	1
31	A169223Z	Guide, Belt, Drive, Front	2
32	A168040	Pulley, Engine	1
33	AM175	Key	1
34	A120516	Clutch/Brake, Elec magnet	1
35	B0756F	Bolt, Hex, Unf, 7/16x3-1/2", Gr5	1
36	W071416	Washer, Flat, Bright, 7/16"X7/8"X16g	2
37	WS071008	Washer, Lock, Spring, 7/16"X5/32"X1/8"	1
38	A169225Z	Guide, Belt, Drive, Rear	1
39	B0860M	Bolt, Hex, M 8x 60, Pc8.8	5
40	RP01	Pin, 'R'	1
41	14070	Sleeve, Pivot, Drive Belt Tensioning Arm	1
42	A169151Z	Arm, Tensioner, Belt, Drive, Hydro	1
43	A120685	Bush, Pivot, Tensioner	2
44	PIVBB17A88	Idler, V Belt, Brg, Sealed, 17id, A88	1
45	14025	Boss, Idler, 17dia, 3high	1
46	WS050216	Washer, Lock, Spring, 5/16"X1/8"X1/16"	1
47	SH0820M	Screw, Hex, M 8x 20, Pc8.	1
48	B0870M	Bolt, Hex, M 8 X 70, Pc8.	1
49	AM264	Spring	1
50	V68	Belt, V	1

# PARTS LIST: A16915G TRANSAXLE

K46DR  
Ser. No. 0000001 - Current  
Rev. 8-21-14

ACTUAL PARTS  
MAY NOT APPEAR  
AS SHOWN



## Bolt Tightening Specs.

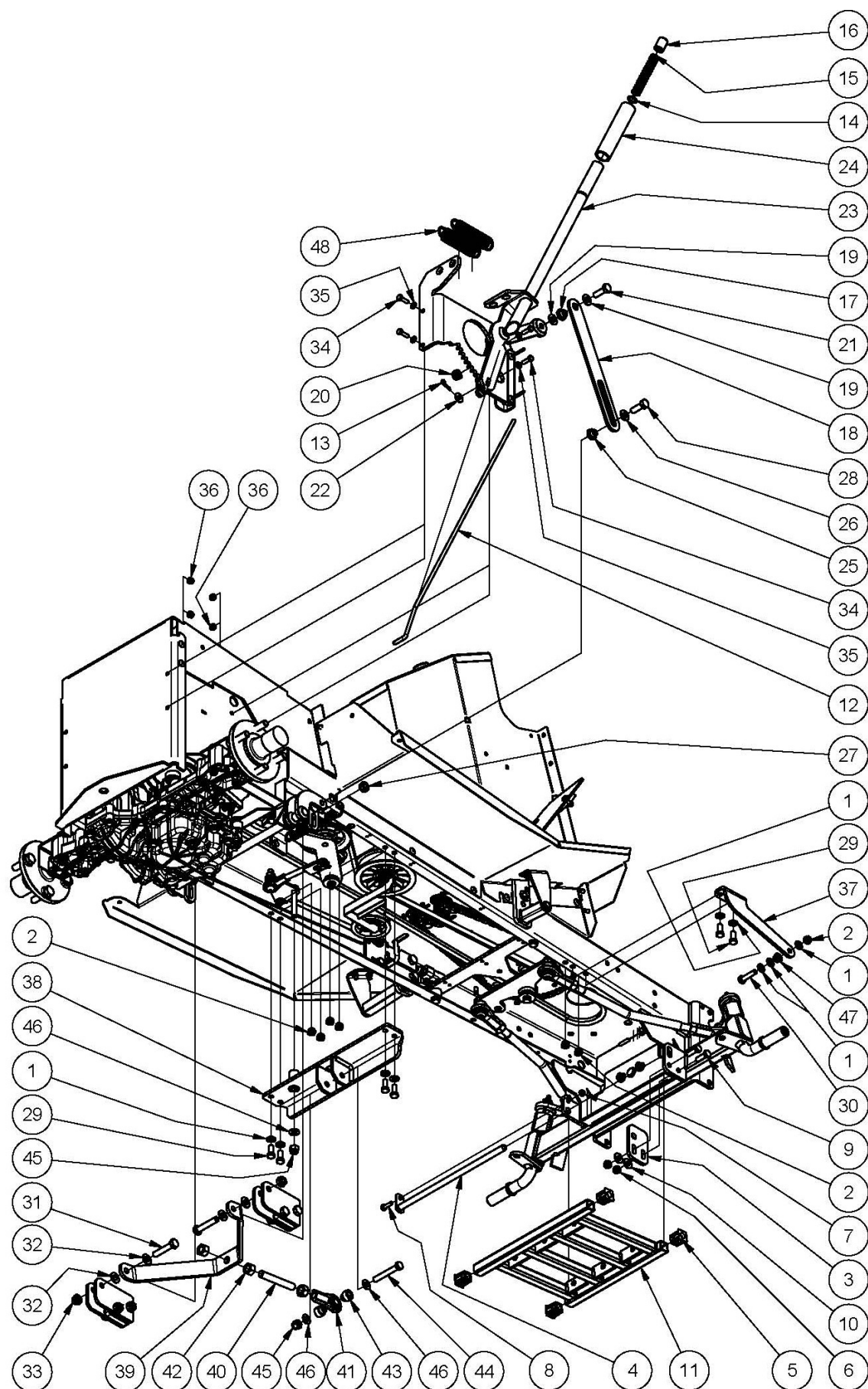
Bolt Size	Torque
M8	16~18 ft.lb. (21~24 N.m)
M10	33~47 ft.lb. (45~64 N.m)

1	K46DR Transmission
200	K46DR Seal Kit
	Kit Includes
	#7 (2) #59
	#15 (2) #72
	(2) #19 (2) #81
	#20 #91
	#26 #99
	#30
	All parts may not be used.
201	K46DR Repair Kit
	Kit Includes
	#24 #38
	#31
	#200 - Seal Kit
	All parts may not be used.
205	K46DR Case Kit
	Kit Includes
	#2 #3
	Cases must be replaced as a set.

## PARTS LIST: A16915G TRANSAXLE

ITEM	PART NUMBER	DESCRIPTION	ITEM	PART NUMBER	DESCRIPTION
1		K46dr Transaxle	54	T168T2029360	Jerky Plate
7	T168T2024250	Vent Valve	55	T22137120000	Washer 12
8	T19216324360	Magnet	56	T1A646029940	Cotter Pin 1/8in 3/4in
10	T168T2099250	Pump Shaft/Bearing Kit	57	T22351060036	Spring Pin 6 * 36
11	T19215427281	Spring 25	58	T22351060040	Roll Pin 6 * 40
12	T1A646089510	Bypass Shaft B	59	Order Seal Kit	O-Ring 1a P14
13	T1A632029520	Bypass Lever	60	T26776120002	Nut 12
14	T22242000100	Snap Ring,10	61	T1A646031570	Differential Gear Kit
15	T168T2036300	Sealing Cap 30	62	T1A646033540	Final Gear (54t)
16	T22252000350	Snap Ring C 35	63	T1A646033250	Final Pinion Collar
18	T187Q0399940	Drain Bolt Kit	64	T1A646033410	Reduction Shaft
19	Order Seal Kit	O-Ring 1a P10a	65	T19216833420	Washer 12 * 32 * 3.2
20	T187T0134380	Seal Tc 153507	66	T187Q0333450	Reduction Gear 36t
21	T26476080552	Tapping Screw 8 * 55	67	T1A646033531	Final Pinion Gear (10t)
22	T26476080302	Tapping Screw 8 * 30	68	T1A646089430	Axle Shaft, Left
24	Order Repair Kit	Center Case W/Ids Filter Kit	69	T1A646089440	Axle Shaft, Right
25	T19216824760	Pin 3 * 9.8	70	T19216334261	Thrust Washer
26	T168T2025220	Filter 105	71	T19216834270	Ring 17
27	T168T2099990	Bolt 10 * 75	72	T19216334280	Seal 19 * 32 * 8
28	T1A646024800	Ids Valve 1.2	73	T19216834350	Bushing 19 * 25
29	T1A646024761	Ids Spring	74	T168T2034240	Bushing 19.05
30	T1A646024790	Ids Filter 300	75	T1A646036121	Brake Shoe
31	Order Repair Kit	Cylinder Block (Pump) Kit	76	T1A646036160	Brake Lever
32	T1A646025200	Spring	77	T1A646036171	Brake Shaft
33	T168T2025250	Pump Shaft	78	T168T2036180	Brake Return Spring
34	T22272000120	E-Ring 12	79	T1A646036200	Brake Actuator
35	T1A646034770	Bearing 6202	80	T22351050032	Spring Pin 5 * 32
36	T19216824210	Motor Housing	81	Order Repair or Seal Kit	O-Ring 1a P12
37	T187T0034750	Thrust Bearing 51106	82	T22351040016	Spring Pin 4 * 16
38	Order Repair Kit	Cylinder Block Kit (Motor)	84	T1A646025770	Pulley C
39	T19216825230	Washer 12 * 24 * 1	85	T1A646083070	Fan Black
40	T1A646025271	Motor Shaft	86	T1A646083060	Wave Washer
41	T19215425310	Snap Ring S15	87	T19215489090	Snap Ring
42	T187Q0325440	Motor Gear 13t Pm	90	T22351030020	Spring Pin 3.0a * 20
43	T1A646034760	Bearing 6202	91	Order Seal Kit	Oil Seal 16 * 22 * .03
44	T187T0027060	Thrust Plastic	95	T22351030016	Spring Pin 3.0a * 16
47	T1A646029010	Magnet Holder	96	T22351035040	Roll Pin 3.5 * 40
49	T1A646029911	Control Shaft	99	T1A646099500	Sealant
50	T168T2029920	Fulcrum	104	T168T2099650	Thrust Bearing/Swash Plate Kit
51	T168T2029800	Torsion Spring	200	T1A646099140	Seal Kit (K46 & T40)
52	T168T2029740	Control Arm A	201	T1A646099460	Repair Kit
53	T1A646029400	Control Lever F	205	T1A646098030	Housing Kit

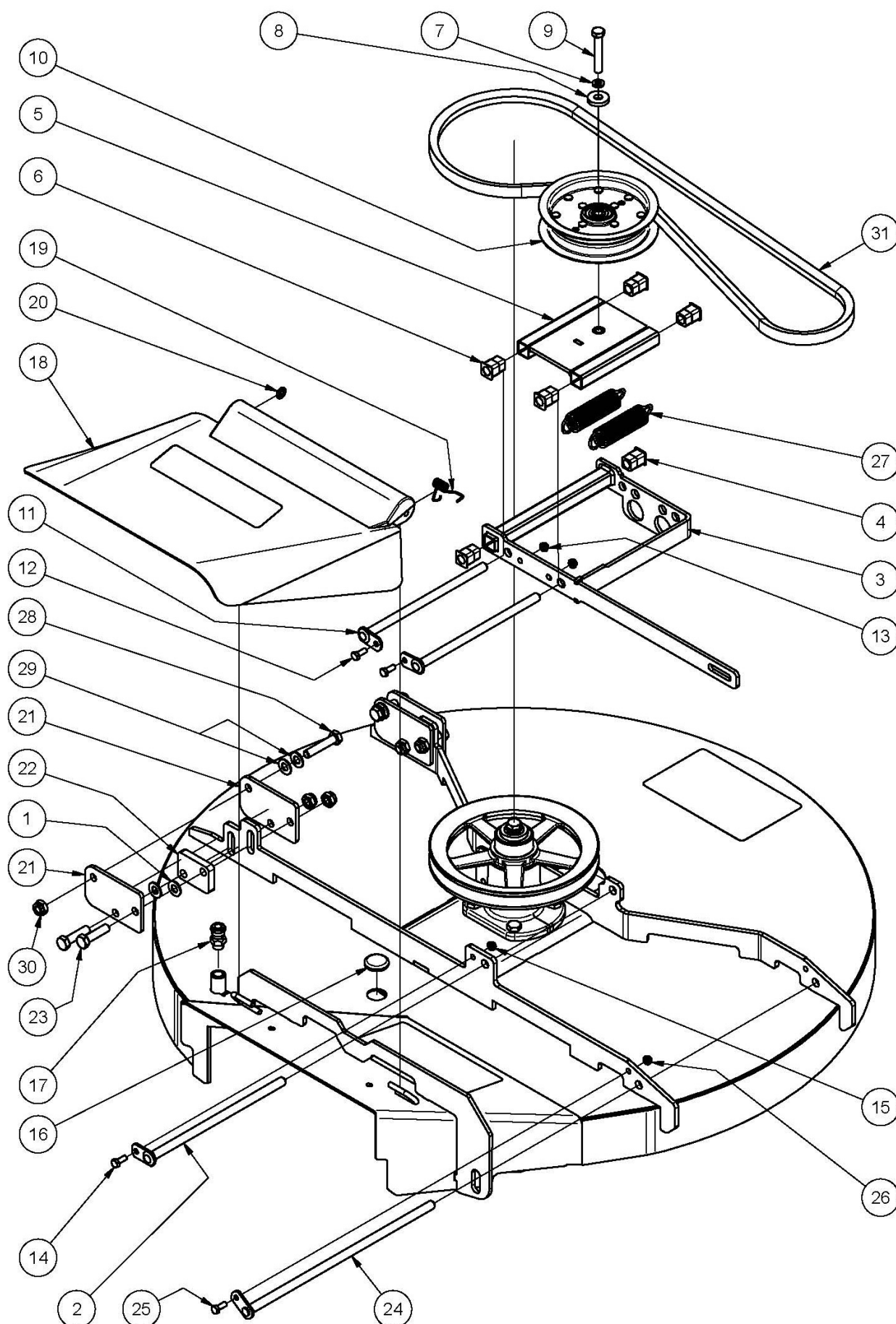
## Page 40



## PARTS LIST: A16915G MOWER SUSPENSION

ITEM	PART NUMBER	DESCRIPTION	QTY
1	W08MN	Washer, Flat, Bright, M 8x 17x1, 2	9
2	NM8NT	Nut, Hex, Nyloc, Thin, M 8, Pc6	7
3	A168103Z	Adjuster, Cut, Transverse	1
4	A168118Z	Pin	1
5	AM369	Bush	4
6	NM8NT	Nut, Hex, Nyloc, Thin, M 8, Pc6	2
7	NM6NT	Nut, Hex, Nyloc, Thin, M 6, Pc6	1
8	SH0620M	Screw, Hex, M 6x20, Pc4.6	1
9	SH0825M	Screw, Hex, M 8x 25, Pc8.8	2
10	W05M202	Washer, Flat, Bright, 5/16"X3/4"X14g	2
11	A168105R	Link, Drag, Attachment, Mowing	1
12	A168197Z	Rod, Adjust, Height, Cut	1
13	RP04	Pin, 'R'	1
14	A120659	Washer	1
15	AM012	Height Adjustment Pawl Push Rod Spring	1
16	AM013Q2	Height Adjustment Pawl Push Rod Button	1
17	A168219Z	Bush	1
18	A168227Z	Link, Height, Cut	1
19	W10MN	Washer, Flat, Bright, M10x 21x1.6	2
20	NM10NT	Nut, Hex, Nyloc, Thin, M10, Pc6	1
21	SH1030M10.9	Screw, Hex, M10x 30, Pc10.9	1
22	W041216	Washer, Flat, Bright, 1/4"X3/4"X16g	1
23	A168233	Sub-Assy, Aduster, Height, Cut	1
24	A168211	Grip, Hand	1
25	A168219Z	Bush	1
26	W10MN	Washer, Flat, Bright, M10x 21x1.6	1
27	NM10NT	Nut, Hex, Nyloc, Thin, M10, Pc6	1
28	SH1030M10.9	Screw, Hex, M10x 30, Pc10.9	1
29	SH0820M	Screw, Hex, M 8x 20, Pc8.8	6
30	B0835M	Bolt, Hex, M8 X 35, Pc8.8	1
31	B1050M	Bolt, Hex, M10 X 50	2
32	W10MN	Washer, Flat, Bright, M10x 21x1.6	4
33	NM10NT	Nut, Hex, Nyloc, Thin, M10, Pc6	2
34	SH0620MPC8	Screw, Hex, M 6x20, Pc8.8	4
35	W06MN	Washer, Flat, Bright, M 6x 12.5x1.2	4
36	NM6N	Nut, Hex, Nyloc, M 6, Pc8	4
37	A168199R	Bracket, Attach, Frame, Cradle	1
38	A169189R15G	Bridge, Suspension, Mower, Hydro	1
39	A168195R	Link, Suspension, Mower	1
40	A168193Z	Rod, Threaded	1
41	RE12INT	End, Rod, Stamp, Unf, 1/2" Int	1
42	N08F	Nut, Hex, Unf, 1/2", Gr5	3
43	A168191Z	Bush, Half, Mount, End, Rod	2
44	B0640C	Bolt, Hex, Unc, 3/8"X2-1/2", Gr5	1
45	NF06CN	Nut, Hex, Nyloc, Thick, Unc, 3/8, Gr5	2
46	W061216	Washer, Flat, Bright, 3/8"X3/4"X16g	3
47	NFM8	Nut, Hex, Flange, Serated, M 8, Pc8	1
48	AM145	Spring, Extension	2

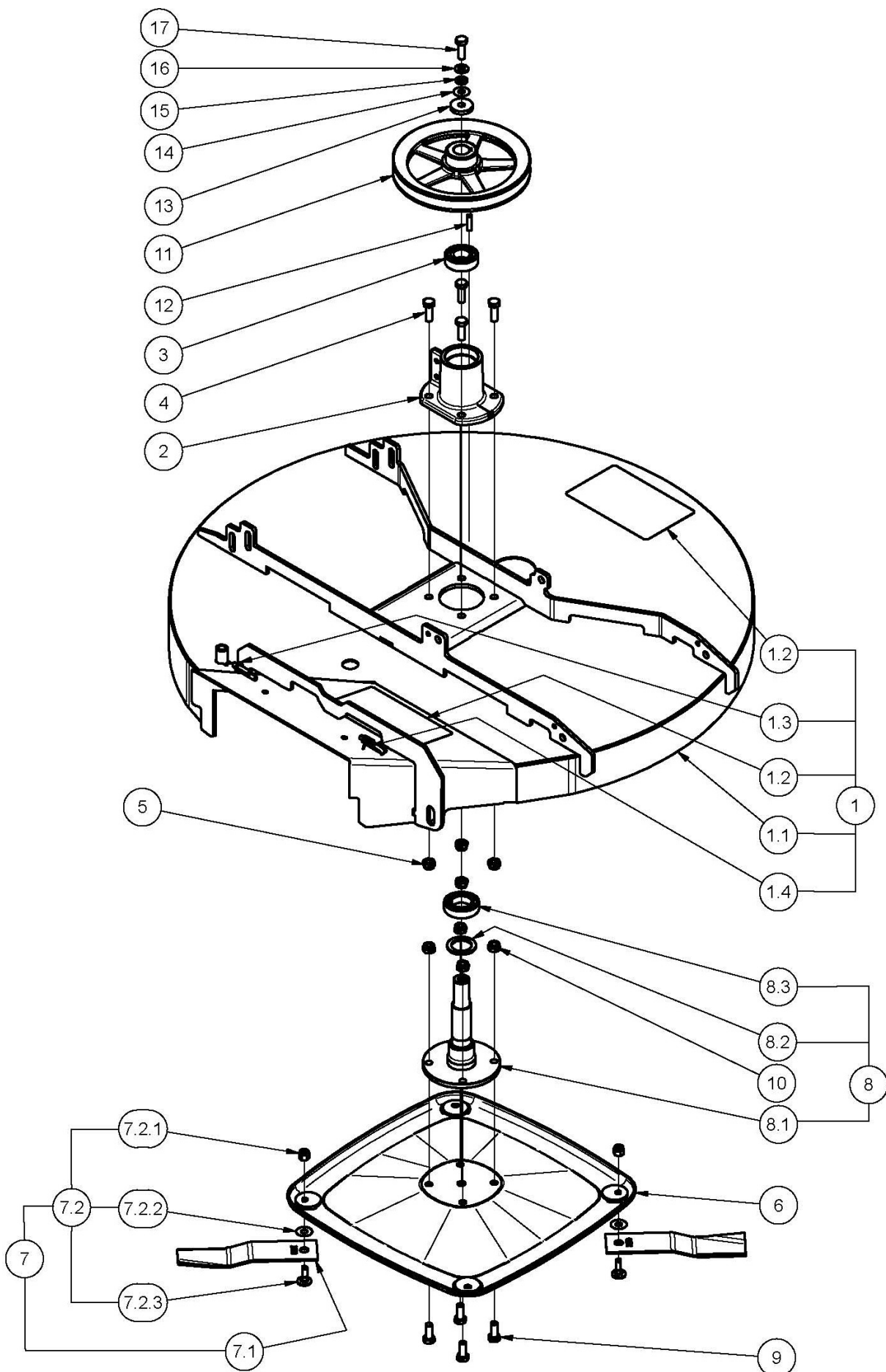
## PARTS LIST: CA170 35" MOWING ATTACHMENT ANCILLARY COMPONENTS



## PARTS LIST: CA170 35" MOW/ATTACHMENT ANCILLARY COMPONENTS

ITEM	PART NUMBER	DESCRIPTION	QTY
1	W10MN	Washer, Flat, Bright, M10x 21x1.6	5
2	A170013Z	Pin	1
3	A170009Z	Frame, Cradle, Idler	1
4	AM230	Bush - Plastic	2
5	A170011Z	Frame, Slide, Idler	1
6	AM230	Bush - Plastic	4
7	WS06081.5	Washer, Lock, Spring, 3/8"X1/8"X3/32"	1
8	W102705	Washer, Flat, Black, 10.5x27x5	1
9	B0636C	Bolt, Hex, Unc, 3/8"X2-1/4", Gr5	1
10	PIFBB06	Idler, Flat, Flg, Brg, Seal, 3/8"X16x5"	1
11	A170015Z	Pin	2
12	SH0616M	Screw, Hex, M 6x 16, Pc4.6	2
13	NM6NT	Nut, Hex, Nyloc, Thin, M 6, Pc6	2
14	SH0616M	Screw, Hex, M 6x 16, Pc4.6	1
15	NM6NT	Nut, Hex, Nyloc, Thin, M 6, Pc6	1
16	A121512	Grommet, Blanking	1
17	A121513	Adaptor, Spray, Water	1
18	AM259	Deflector	1
19	A100003	Spring, Torsion, Deflector	1
20	AM274	Fastener, Pushon, Round, 1/4"	1
21	A170017Z	Mount, Suspension, Rear	4
22	A170019Z	Spacer, Mount, Suspension, Rear	2
23	B1040M	Bolt, Hex, M10x40, Pc8	4
24	13016	Pin, 11.1 Diax327l(Plated)	1
25	SH0616M	Screw, Hex, M 6x 16, Pc4.6	1
26	NM6NT	Nut, Hex, Nyloc, Thin, M 6, Pc6	1
27	AM145	Spring, Extension, Weight Compensating	2
28	B1050M	Bolt, Hex, M10 X 50	2
29	W10MN	Washer, Flat, Bright, M10x 21x1.6	4
30	NM10NT	Nut, Hex, Nyloc, Thin, M10, Pc6	2
31	V66	Belt, V	1

## PARTS LIST: CA170 35" MOWING ATTACHMENT CUTTER COMPONENTS

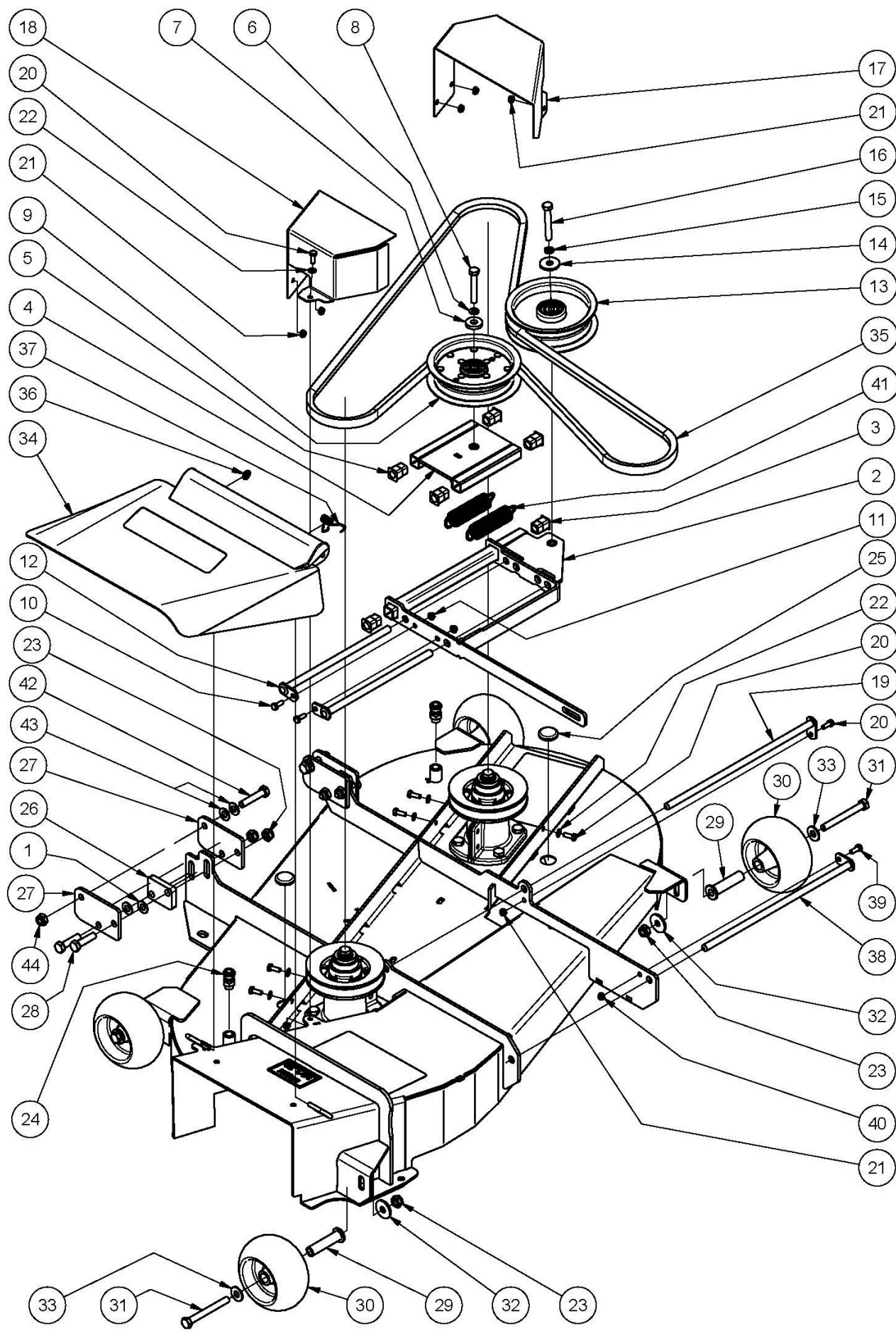




## PARTS LIST: CA170 35" MOWING ATTACHMENT CUTTER COMPONENTS

ITEM	PART NUMBER	DESCRIPTION	QTY
1	KIT261	Kit, Housing, Cutter, 890(35")	1
1.1		Deck, Mower, Side, 890(35")	1
1.2	DEC116	Decal, Danger, Mowing Attachment	2
1.3	AM274	Fastener, Pushon, Round, 1/4"	1
1.4	A100003	Spring, Torsion, Deflector	1
2	A100054B	Housing, Bearing, Flange, Guide Mount	1
3	BB255215NN	Bearing, Ball	1
4	SH1030M	Screw, Hex, M10x 30, Pc8.8	4
5	NM10NT	Nut, Hex, Nyloc, Thin, M10, Pc6	4
6	A170003B	Disc, Cutter	1
7	SKIT54N	Pair, Blade+Bolt+Washer+Nut, Standard, 198	1
7.1		Blade, Mower, Swingback, Standard, 198	2
7.2	SKIT01D1	Blade Bolt & Nut Set	1
7.2.1		Nut, Hex, Nyloc, Thick, Unc, 3/8, Gr5	2
7.2.2		Washer, Wave, 3/8"X1"	2
7.2.3		Blade Bolt Grade 8	2
8	A170021	Sub-Assy, Spindle, Flanged, Cutter	1
8.1		Spindle, Flanged, Cutter0	1
8.2	A100060Z	Washer, Flat, 32x45x3	1
8.3	BB305513NS	Bearing, Ball	1
9	SH1025M	Screw, Hex, M10 X 25, Pc 8.8	4
10	NM10NT	Nut, Hex, Nyloc, Thin, M10, Pc6	4
11	A170007	Pulley, Cutter, Ci	1
12	A156017	Key	1
13	W103506	Washer, Flat, Black, 10x35x6	1
14	WW0616	Washer, Wave, 3/8"X1"	1
15	WSM10X3.66X2.69	Washer, Lock, Spring, M10x3.66x2.69, Gal	1
16	W10MN	Washer, Flat, Bright, M10x 21x1.6	5
17	SH1030M10.9	Screw, Hex, M10x 30, Pc10.9	1

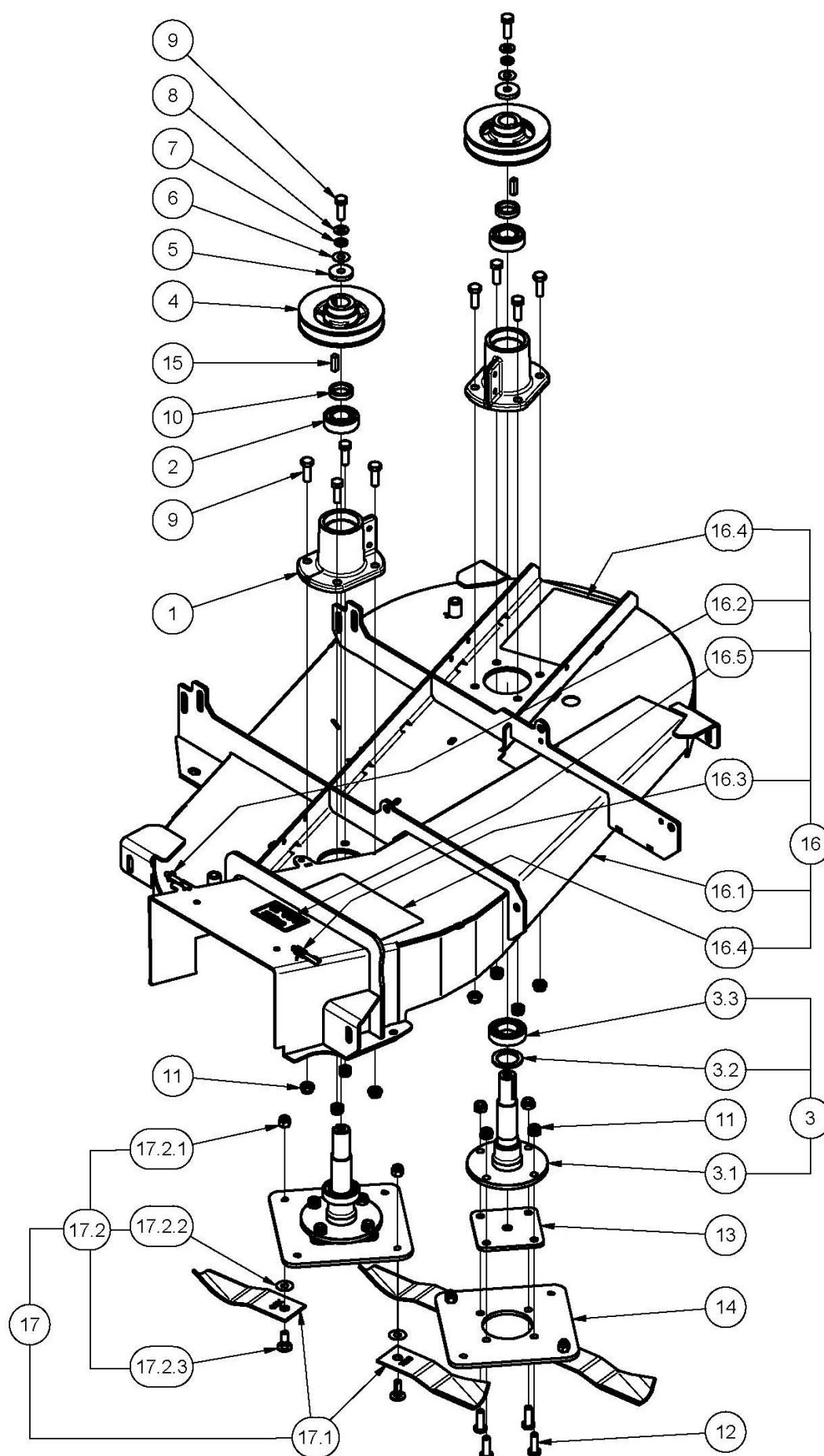
**PARTS LIST: CA171 42" MOWING ATTACHMENT ANCILLARY COMPONENTS**



## PARTS LIST: CA171 42" MOWING ATTACHMENT ANCILLARY COMPONENTS

ITEM	PART NUMBER	DESCRIPTION	QTY
1	W10MN	Washer, Flat, Bright, M10x 21x1.6	6
2	A171019Z	Frame, Cradle, Idler	1
3	AM230	Bush - Plastic	2
4	A170011Z	Frame, Slide, Idler	1
5	AM230	Bush - Plastic	4
6	WS06081.5	Washer, Lock, Spring, 3/8"X1/8"X3/32"	1
7	W102705	Washer, Flat, Black, 10.5x27x5	1
8	B0636C	Bolt, Hex, Unc, 3/8"X2-1/4", Gr5	1
9	PIFBB06	Idler, Flat, Flg, Brg, Seal, 3/8"X16x5"	1
10	SH0616M	Screw, Hex, M 6x 16, Pc4.6	2
11	NM6NT	Nut, Hex, Nyloc, Thin, M 6, Pc6	2
12	A170113Z	Pin	2
13	PIFBB05	Idler, Flat, Flg, Brg, Seal, 3/8"X24x5"	1
14	W0620HD	Washer, Flat, Black, 3/8"X1-1/4"X3	1
15	WS06081.5	Washer, Lock, Spring, 3/8"X1/8"X3/32"	1
16	B0640C	Bolt, Hex, Unc, 3/8"X2-1/2", Gr5	1
17	A171007R	Guard, Pulley, Left	1
18	A171010R	Guard, Pulley, Right	1
19	13016	Pin	1
20	SH0616M	Screw, Hex, M 6x 16, Pc4.6	7
21	NM6NT	Nut, Hex, Nyloc, Thin, M 6, Pc6	7
22	W06MN	Washer, Flat, Bright, M 6x 12.5x1.2	6
23	NM10NT	Nut, Hex, Nyloc, Thin, M10, Pc6	10
24	A121513	Adaptor, Spray, Water	2
25	A121512	Grommet, Blanking, 1"	2
26	A170019Z	Spacer, Mount, Suspension, Rear	2
27	A170017Z	Mount, Suspension, Rear	4
28	B1040M	Bolt, Hex, M10x40, Pc8	4
29	A121504Z	Sleeve, Roller, Deck, Cutter	4
30	A121503	Wheel, 5"X3", Hub 5/8"X2 1/2"	4
31	B1090M	Bolt, Hex, M10x 90, Pc8.8	4
32	W0620HD	Washer, Flat, Black, 3/8"X1-1/4"X3	4
33	W10M	Washer	4
34	AM259	Deflector	1
35	V69	Belt, V	1
36	AM274	Fastener, Pushon, Round, 1/4"	1
37	A100003	Spring, Torsion, Deflector	1
38	13016	Pin, 11.1 Diax327I(Plated)	1
39	SH0616M	Screw, Hex, M 6x 16, Pc4.6	1
40	NM6NT	Nut, Hex, Nyloc, Thin, M 6, Pc6	1
41	AM145	Spring, Extension	2
42	B1050M	Bolt, Hex, M10 X 50	2
43	W10MN	Washer, Flat, Bright, M10x 21x1.6	4
44	NM10NT	Nut, Hex, Nyloc, Thin, M10, Pc6	2

## PARTS LIST: CA171 42" MOWING ATTACHMENT CUTTER COMPONENTS



## PARTS LIST: CA171 42" MOWING ATTACHMENT CUTTER COMPONENTS

ITEM	PART NUMBER	DESCRIPTION	QTY
1	A100054B	Housing, Bearing, Flange, Guide Mount, Black	2
2	BB255215NN	Bearing, Ball	2
3	A170021	Sub-Assy, Spindle, Flanged, Cutter	2
3.1		Spindle, Flanged, Cutter	1
3.2	A100060Z	Washer, Flat, 32x45x3	1
3.3	BB305513NS	Bearing, Ball	1
4	A156010	Pulley, Cutter, Ci	2
5	W103506	Washer, Flat, Black, 10x35x6	2
6	WW0616	Washer, Wave	2
7	WSM10X3.66X2.69	Washer, Lock, Spring, M10x3.66x2.69, Gal	2
8	W10MN	Washer, Flat, Bright, M10x 21x1.6	6
9	SH1030M10.9	Screw, Hex, M10x 30, Pc10.9	10
10	A171050Z	Spacer, Sleeve, 25.2x35x 8	2
11	NM10NT	Nut, Hex, Nyloc, Thin, M10, Pc6	16
12	BHSSM10X30	Screw, Button, Hex Soc, M10x 30, Pc10.9	8
13	A152011R	Spacer, Disc, Cutter	2
14	A152013R	Disc, Cutter	2
15	A156017	Key	2
16	KIT262	Kit, Housing, Cutter, 1055(42")	1
16.1		Deck, Mower, Side, 1055(42")	1
16.2	AM274	Fastener, Pushon, Round, 1/4"	1
16.3	A100003	Spring, Torsion, Deflector	1
16.4	DEC116	Decal, Danger, Mowing Attachment	2
16.5	DEC334	Decal, 42" Cut	1
17	KIT259	Pair, Blade+Bolt+Washer+Nut, Airflow, 163	2
17.1		Blade, Mower, Swingback, Airflow, 163	2
17.2	SKIT01D1	Blade Bolt & Nut Set	1
17.2.1		Nut, Hex, Nyloc, Thick, Unc, 3/8, Gr5	2
17.2.2		Washer, Wave	2
17.2.3		Blade Bolt Grade 8	2

## PARTS LIST: A16915G DECALS



PART NO.	DESCRIPTION	CS45H19B35	CS45H19B42
95067	Non-Skid, Pedal, Brake, 13/32	1	1
A122068	Non-Skid, Platform, 240 X 200	1	1
A163069	Non-Skid, Footrest, 285x100	2	2
A168223	Non-Skid, Pedal, Drive	1	1
DEC116	Decal, Danger, Mowing Attachment	2	2
DEC135	Decal, Caution, Hot Muffler	1	1
DEC136	Decal, Drive Pedal	1	1
DEC177	Badge, Steering Wheel, New Era, Oval	1	1
DEC180	Badge, Bonnet New Era	1	1
DEC240	Decal, Proudly Australian, Red	2	2
DEC325	Decal, Sman 4000, Cox, Hydro	1	1
DEC330	Decal, Cox, 250x 80, Red	1	1
DEC333	Decal, Sman 4500, Cox, Bonnet, Side	2	2
DEC337	Decal, Sman 4500, Deck, Do Not Step, 35"	1	NIL
DEC339	Decal, Sman 4500, Side, Left, 19.0hp, Hydro	1	1
DEC340	Decal, Sman 4500, Control, Speed	1	1
DEC341	Decal, Sman 4500, Switch, Ignition	1	1
DEC343	Decal, Sman 4500, Clutch/Brake	1	1
DEC353	Decal, Sman 4500, Deck, Do Not Step, 42"	NIL	1
DEC400	Decal, Sman 4500, Side, Right, 19.0hp	1	1
DEC402	Decal, Sman 4500, Instruct, Hydro	1	1
DEC408	Decal, Sman 4500, Height, Cut	1	1

# Specifications

## Model No A16915G COX Stockman 4500 Ride-on Lawn Tractor

<b>Product Code</b>	<b>CS45H19B35</b>	19HP (14.Kw) , Hydrostatic Drive, 890 mm (35") Side Discharge Mowing Attachment
	<b>CS45H19B42</b>	19HP (14.Kw) , Hydrostatic Drive, 1055 mm (42") Side Discharge Mowing Attachment

Dimensions, Mass, Capacity		CS45H19B35	CS45H19B42
Length Width	Lawn Tractor	1860mm	1860 mm
	Lawn Tractor	889 mm	889mm
	Inc Mowing Attachment Deflector Down	1110 mm	1321mm
	Inc Mowing Attachment Deflector Up	985 mm	1196mm
Height		1130 mm	1130 mm
Wheel Base		1326 mm	1326 mm
Front Track [13x6.50-6 Tyres]		726 mm	726 mm
Rear Track [18x9.50-8 Tyres]		656 mm	656 mm
Dry Mass	Lawn Tractor	202.5 kgs	202.5 kgs
	Mowing Attachment 35"	31.5 kgs	
	Mowing Attachment 42"		47.5 kgs
	Total	234 kgs	250 kgs
Fuel Tank Capacity			10.5 Litre
Engine Oil Capacity Including Oil Filter			1.7 Litre

Engine Design & Performance		
Model		Briggs & Stratton 33R877 00119B1
Type:- Petrol, 4 Stroke, Air Cooled, Vertical PTO, 25.4 mm [1"] Shaft, Fuel Pump, Electric Start		Intek
Cylinder Configuration		Single Cast Iron Sleeve
Valve Type		Overhead
Displacement		540 cm3
Bore x Stroke		94 mm x 77.7 mm
Maximum Rated Gross Power to SAE J1940 & J1995 @3600		14.1 kW [19.0 hp]
Maximum Rated Gross Torque to SAE J1940 & J1995 @2600		41.56Nm (30.6Lb.ft)
Rated Engine Speed (No Load)	Maximum	3600 RPM
	Idle	1800 RPM
Alternator Capacity (12 Volt DC)		9 Amps
Dry Mass		32.6 kg

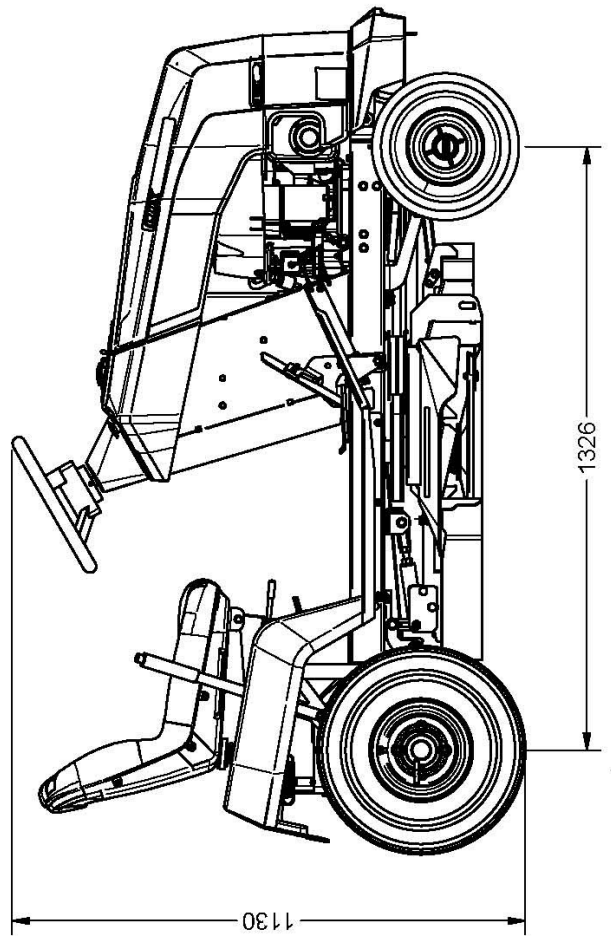
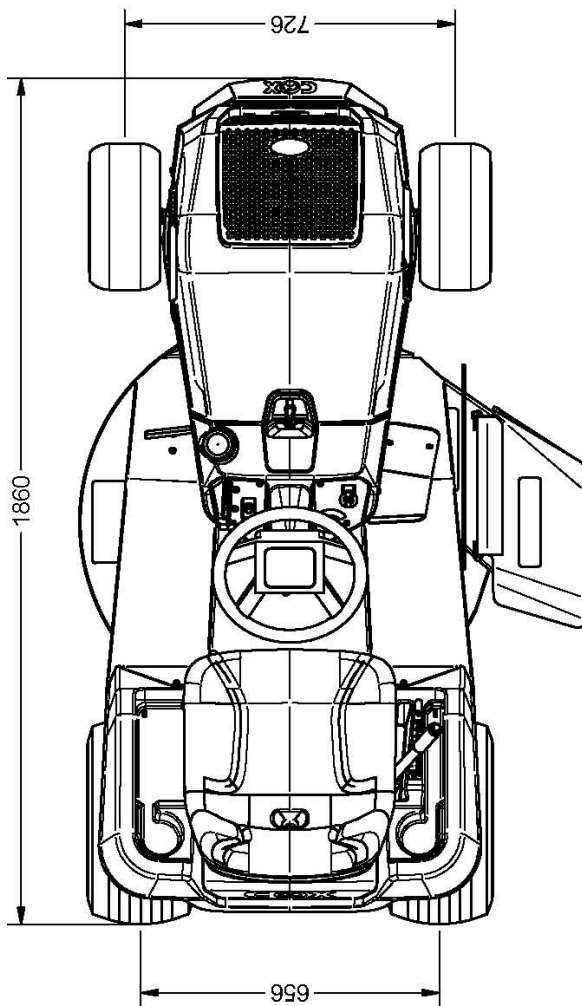
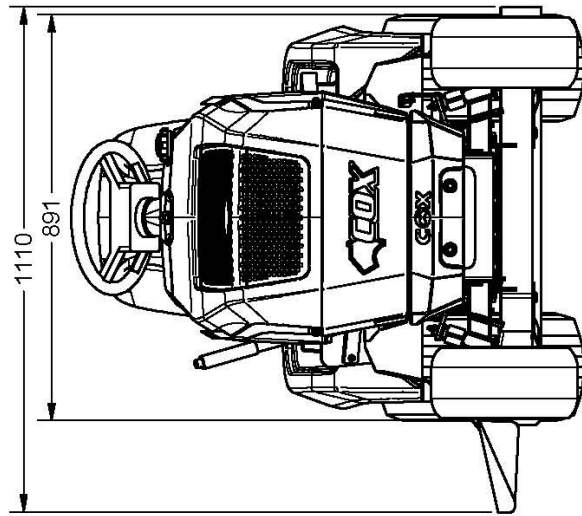
Transaxle Design & Performance		
<b>Model &amp; Type:-</b> Hydrostatic Fluid Drive through Gear Transmission & Differential + Hydrostatic Bypass		Tuff Torq K46DR
Disengagement + Internal Wet Disk Brake + External Reservoir Tank		
Ground Speed (Infinitely Variable)	Forward	0-11.4 km/h
	Reverse	0-6 km/h
Lubrication Capacity:-		2.3 Litres
Dry Mass		12.5 kg

Mowing Attachment Design & Performance	CA17014E	CA17115G
Type: Engine PTO Shaft Mounted Electromagnetic Clutch/Brake, Spring Tensioned, Single V Belt, 4 Parallel Link Points (3 Adjustable).		
1 Spindle, Right Side Discharge, 2 Swing Back Blades	890mm (35")	
2 Spindle, Right Side Discharge, 4 Swing Back Blades		1055 mm [42"]
Anti-scalp Roller	1 optional adjustable	4 Adjustable
Cut Height Range (10 Position)	15-85mm	15-85mm

Miscellaneous	CS45H19B35	CS45H19B42
Minimum Uncut Grass Diameter (Left Turn)	1560mm	1385mm
Maximum Grass Cut per Hour	10000m2	12000m2
Minimum Turning Diameter (Inside Back Tyre)	Left Turn	1200mm
	Right Turn	1200mm
Battery (12 Volt Maintenance Free)	MFU1	MFU1
Fuse (12 Volt ) Blade Type	15 Amps	15 Amps
Maximum Trailer Gross Weight	250 kg	250 kg
Maximum Trailer Hitch Point Load	10 kg	10 kg

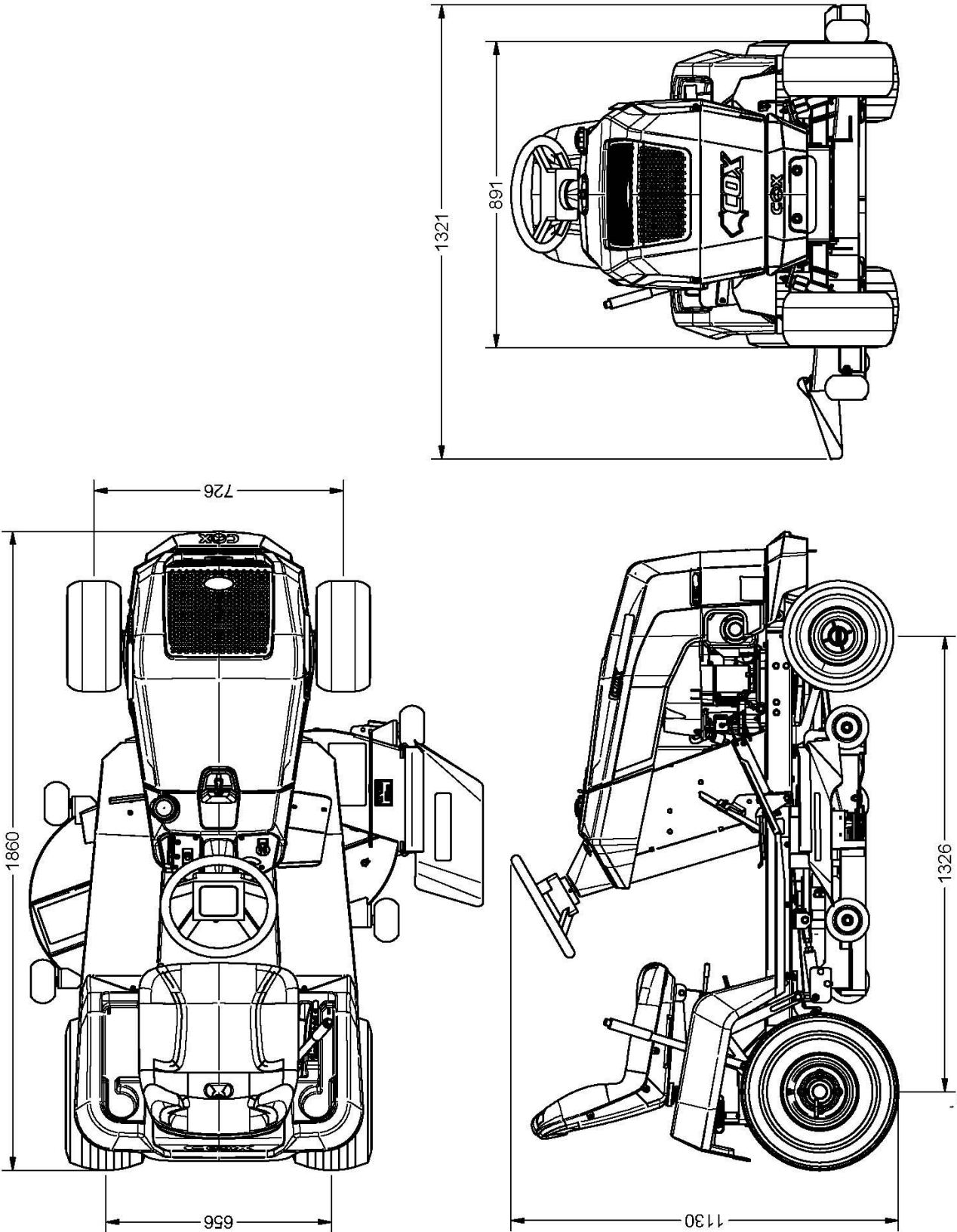
Maintenance	CS45H19B35	CS45H19B42
Fuel	Unleaded Petrol, Regular or Premium or E10	
Engine Oil (above + 4"C)	SAE 30 A.P.I. "SF","SG","SH","SJ"	
Transaxle Oil	Initial top up SAE 10W-30 A.P.I. Class "CD" replace with 5W50 synthetic	
Spark Plug	Champion QC12YCGap 0.76 mm	
Mower Blades & Fasteners Part No	SKIT54N	KIT259 (qty 2)
Drive Belt Cox Part No	V68	V68
Cutter Belt Cox Part No	V66	V69

## DIMENSIONS - CS45H19B35





**DIMENSIONS - CS45H19B42**





## **Cox Industries (Australia) Pty Ltd**

**70 Landseer Street  
Acacia Ridge Qld 4110  
Australia**

**PH 07 3323 2222 FAX 07 3344 6233**

Web Site Address: [www.coxmowers.com.au](http://www.coxmowers.com.au)

Email: [sales@cox-mowers.com.au](mailto:sales@cox-mowers.com.au)